

IMPALA 2015

CHEVROLET





Impala LTZ in Blue Velvet Metallic.

Information Provided by:



**EVERY MEMORABLE
JOURNEY BEGINS WITH
AN UNFORGETTABLE RIDE.**

Experience the harmonious blend of wants and needs. The convergence of aesthetics and aerodynamics in a stunning silhouette. Here craftsmanship puts comfort in a stunning context. Connectivity spreads its wings with available OnStar with 4G LTE Wi-Fi¹ built right in. The 2015 Impala doesn't just stand on its own with the world's leading premium sedans. It stands out entirely.

FIND NEW ROADS™

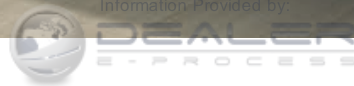
¹ Devices must be WPA2-compliant with active OnStar service and data plan. Wi-Fi devices manufactured prior to 2006 may not be compatible. Please consult your device manufacturer for information regarding the WPA2 security protocol and Wi-Fi device compatibility. Visit onstar.com for details and system limitations.

**“WHY SPLURGE \$70,000 ON AN AUDI, BENZ, OR LEXUS
TO IMPRESS THE NEIGHBORS WHEN THE SAME MONEY
WILL BUY AN IMPALA AND A SECOND RIDE...”**

— CARANDDRIVER.COM, MARCH 2013



Impala LTZ in Silver Ice Metallic.



EXTERIOR DESIGN



LAWS OF ATTRACTION.

- 1. Aesthetically pleasing design supports aerodynamic performance.*
- 2. Available LED daytime running lamps enhance visibility to others.*
- 3. The powerdome hood, wide chrome grille and available high-intensity discharge headlamps establish a confident presence.*

Impala LTZ in Silver Ice Metallic.



PURPOSEFUL DESIGN. With its sweeping roofline and sculpted body contours, Impala finesses the air with its aerodynamic styling while capturing the eye from every angle.

DAZZLING CHROME. In sunlight and under streetlights, bright chrome accents create a reflective dance that accentuates the graceful exterior lines.

WHEEL SELECTIONS. Poise meets pavement with a variety of stunning wheel choices, including available 20-inch aluminum wheels.

INTERIOR DESIGN



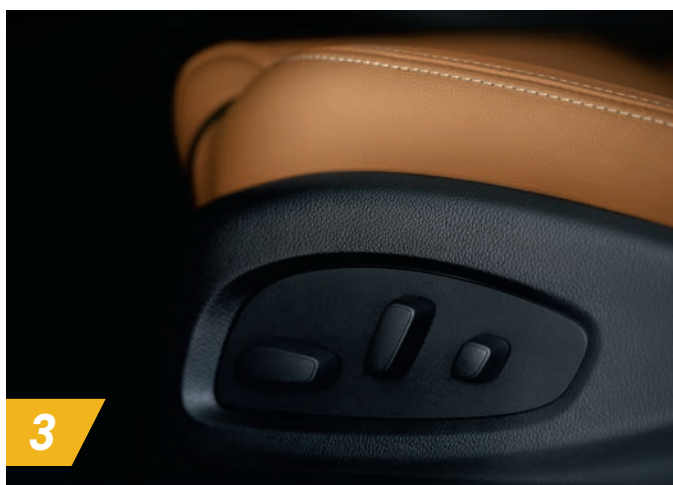
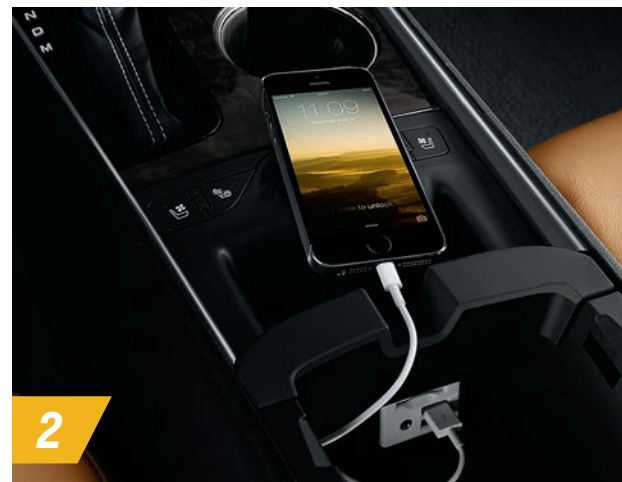
Impala LTZ interior in Jet Black/Mojave
with available features.

**“...COMFORT, ROOMINESS AND
LUXURY TOUCHES EXPECTED
OF A TRUE FLAGSHIP.”**

– CARS.COM, MARCH 2013







CARRY EVERYTHING FROM GOLF CLUBS TO LUGGAGE WITH 18.8 CUBIC FEET¹ OF TRUNK SPACE.

1. Weather the storm with umbrella storage in the front door pockets.

2. Charge your smartphone with the USB port² in the center console.

3. Get situated with available 8-way power-adjustable front seats with power lumbar control.

4. Plug a laptop or other device into the available 120-volt outlet behind the center console.

¹ Cargo and load capacity limited by weight and distribution.

² Not compatible with all devices.



SELF-MADE. Inside Impala, you're the center of attention. Meticulous French stitching and available woodgrain trim accentuate the flowing instrument panel, which wraps you in ergonomic convenience. The available heated steering wheel combines with available heated and ventilated leather-appointed

front seats to offer year-round comfort. Your favorite songs come alive with the available 11-speaker Bose® Centerpoint® Surround Sound system, while the sounds of the outside world seem to disappear with the available Bose Active Noise Cancellation! Every last detail puts you first.

¹ Requires 2.5L engine.



Information Provided by:
DEALER
E-PROCESS

TECHNOLOGY



Safety features are no substitute for the driver's responsibility to operate the vehicle in a safe manner. The driver should remain attentive to traffic, surroundings and road conditions at all times. Read the vehicle Owner's Manual for more important safety information.

TECH THAT PROTECTS. Some of the most impressive Impala features are the ones you can't see, including the available Advanced Safety Package with Forward Collision Alert, Side Blind Zone Alert, Rear Cross Traffic Alert and Lane Departure Warning.

FORWARD COLLISION ALERT. A high-resolution camera scans for vehicles ahead and alerts you of a potential crash risk.

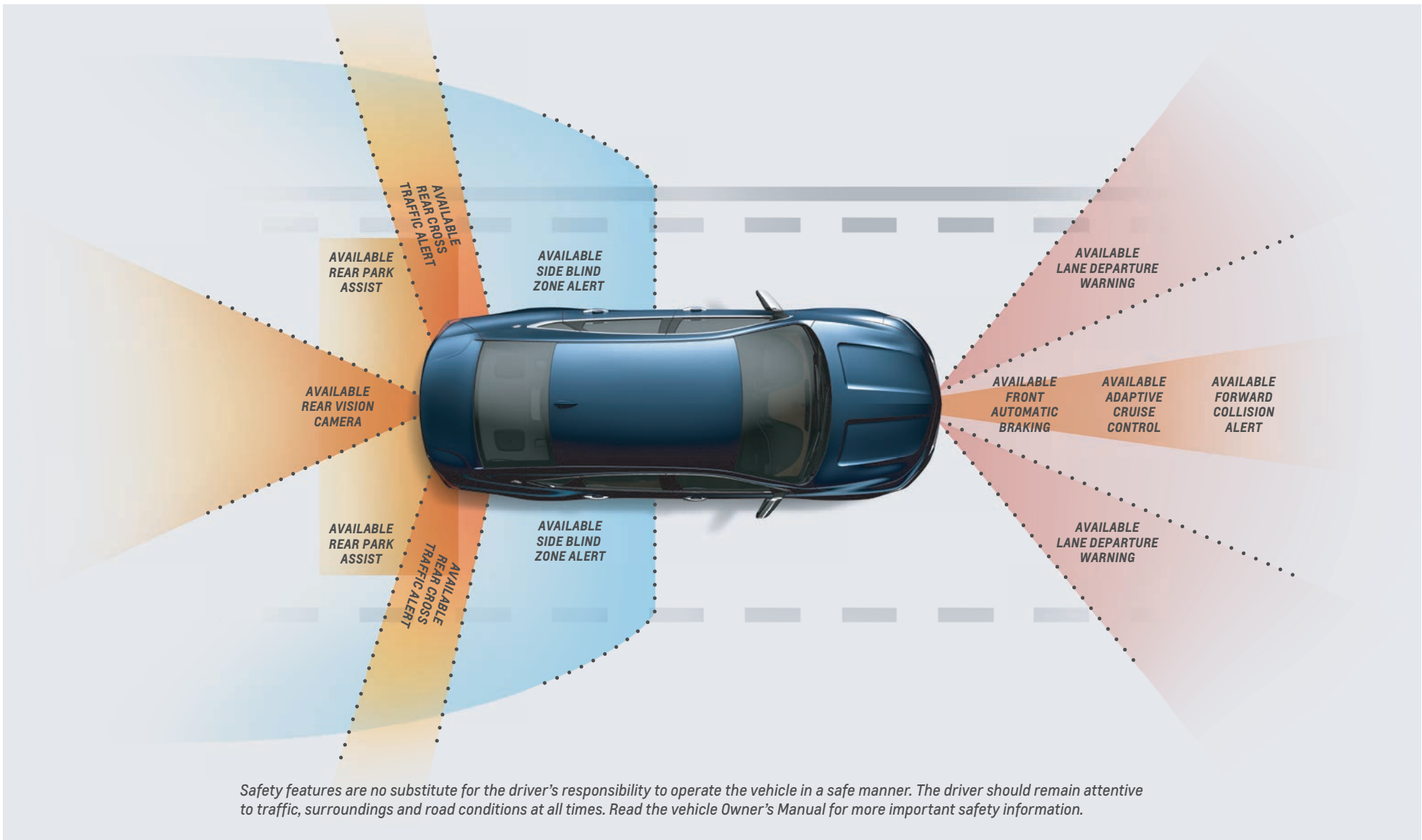
SIDE BLIND ZONE ALERT. Utilizing radar sensors on both sides of Impala, it identifies vehicles in your side mirror blind zones and triggers LED-lit symbols in the corresponding exterior mirrors to signal their presence.

REAR CROSS TRAFFIC ALERT. Employing the same radar sensors as Side Blind Zone Alert, it signals you of crossing traffic behind your Impala when backing up by sounding an alert and providing visual cues on the rear vision camera screen.



Information Provided by:

DEALER
E-PROCESS



REAR VISION CAMERA. When traveling in reverse at low speeds, the available rear vision camera allows you to see stationary objects behind your Impala on the screen.

LANE DEPARTURE WARNING. If you unintentionally drift out of your lane without signaling, it sounds an audible alert to let you know.

FULL-SPEED-RANGE ADAPTIVE CRUISE CONTROL. Using grille-mounted radar, this available feature maintains your selected cruise speed and following gap distance, automatically braking when necessary in stop-and-go traffic.

FRONT AUTOMATIC BRAKING. The 2014 Impala has earned a "Superior" rating from the Insurance Institute for Highway Safety (IIHS). Working alongside Adaptive Cruise Control, this available feature alerts you if the vehicle ahead slows unexpectedly. If you don't react quickly enough, it automatically applies the brakes to help prevent a front-end collision.

INTRODUCING AVAILABLE BUILT-IN 4G LTE WI-FI.

Connected by  4G LTE

Impala LTZ in Blue Velvet Metallic
with available features.

INTERNET IN YOUR IMPALA. Chevrolet is the first and only car company to bring built-in 4G LTE Wi-Fi to cars, trucks and crossovers, offering drivers the ability to seamlessly connect their smart devices and vehicles to the Internet!

THE ULTIMATE MOBILE WI-FI HOTSPOT. Whenever your Impala is on, available OnStar 4G LTE Wi-Fi is on too. It offers great signal quality and bandwidth for up to seven devices!

FAST, EASY, RELIABLE. Available built-in OnStar with 4G LTE provides a better in-vehicle experience than your smartphone. Our stronger signal means you have a reliable connection. It's automatically on after initial setup and ready to connect to your mobile devices!

¹ Devices must be WPA2-compliant with active OnStar service and data plan. Wi-Fi devices manufactured prior to 2006 may not be compatible. Please consult your device manufacturer for information regarding the WPA2 security protocol and Wi-Fi device compatibility. Visit onstar.com for details and system limitations.



Information Provided by:
DEALER
E-PROCESS

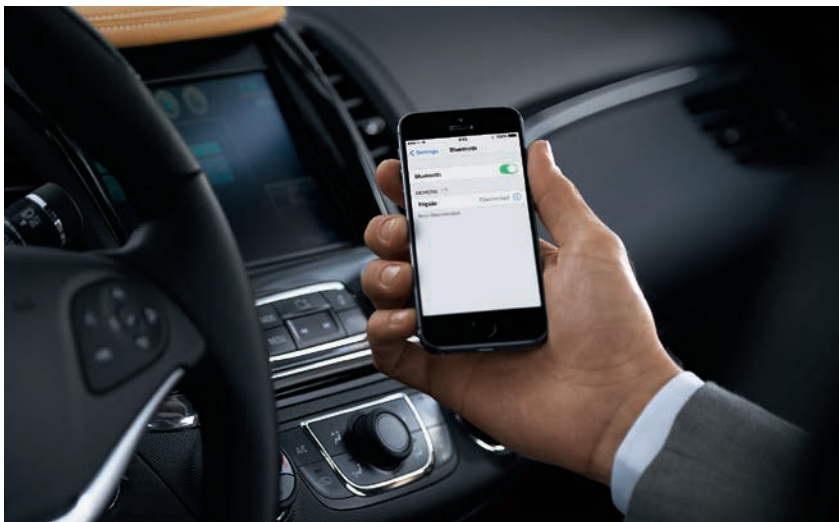


TOTALLY CONNECTED. Available Chevrolet MyLink¹ with Bluetooth[®] wireless technology² makes it easy to connect to calls, music, contacts and more on the go – all by using natural voice commands or the 8-inch diagonal color touch-screen display.

SMART NAVIGATION. Get directions with OnStar[®] Turn-by-Turn Navigation³, standard for six months. Or go for the available Chevrolet MyLink¹ Radio with Navigation, featuring full GPS navigation, along with a 3-month trial of SiriusXM NavTraffic and Travel Link⁴ for weather and traffic updates, fuel prices and more.

SIRI EYES FREE. If you have a compatible iPhone[®], you can use Siri Eyes Free⁵ to compose and read text messages, access your calendar, get game scores, check the weather and more.





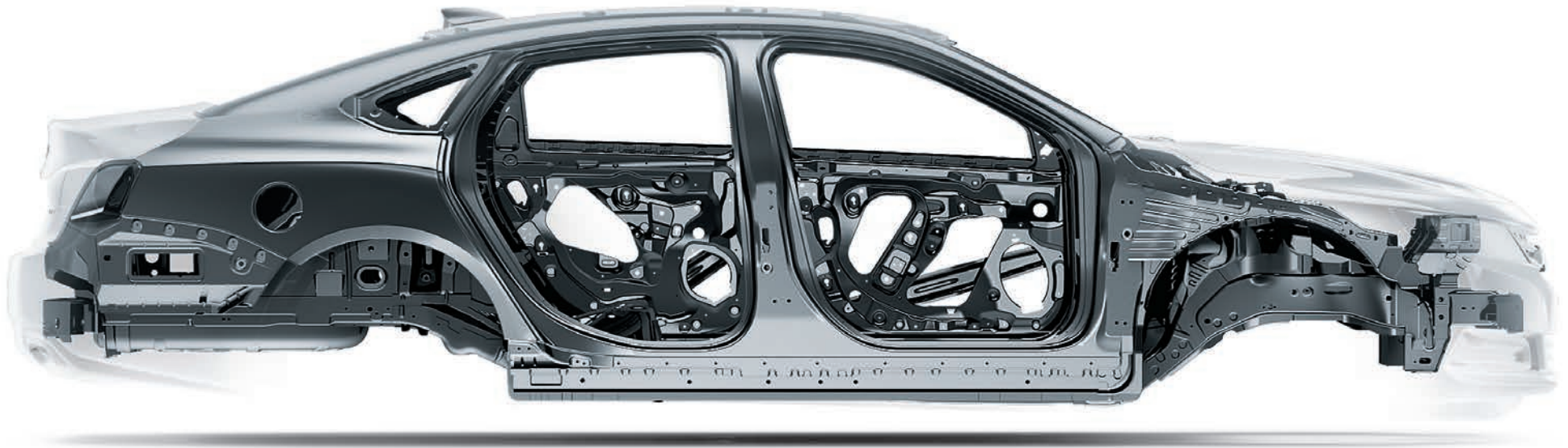
DRAG AND DROP. To customize the home screen, simply drag and drop the application icons – just like you would on a smartphone or tablet.

STREAMING MUSIC. Available Chevrolet MyLink¹ allows you to stream music from online sources like Pandora[®] Internet Radio² or from playlists stored on your smartphone. You can also enjoy listening to your 3-month trial of SiriusXM Satellite Radio³ All Access Package.

HIDDEN STORAGE. The 8-inch diagonal color touch-screen includes hidden, lockable storage behind the display to stow valuables safely out of reach. It also includes a USB port⁴ for charging your smartphone.

¹ Full functionality requires compatible Bluetooth and smartphone, and USB connectivity for some devices. ² Data plan rates apply. ³ If you subscribe after your trial period, subscriptions are continuous until you call SiriusXM to cancel. See SiriusXM Customer Agreement for complete terms at siriusxm.com. Other fees and taxes will apply. All fees and programming subject to change. For more information about NavTraffic, visit siriusxm.com/navtraffic. For more information about Travel Link, visit siriusxm.com/travellink. XM satellite service is available only in the 48 contiguous United States and D.C. ⁴ Not compatible with all devices.

SAFETY



FIVE-STAR SAFETY. The 2015 Impala received the highest possible 5-Star Overall Vehicle Score from the National Highway Traffic Safety Administration (NHTSA)¹

CORE STRENGTH. With high-strength steel forming a rigid structure around the passenger compartment and 10 standard air bags², Impala establishes a solid foundation for safety.

STABILITRAK ELECTRONIC STABILITY CONTROL. This standard system automatically adapts to the environment to help you stay on course in challenging weather and road conditions.

¹ Government 5-Star Safety Ratings are part of the National Highway Traffic Safety Administration's (NHTSA's) New Car Assessment Program (www.SaferCar.gov). ² Always use safety belts and the correct restraint for your child's age and size. Even in vehicles equipped with the Passenger Sensing System, children are safer when properly secured in a rear seat in the appropriate infant, child or booster seat. Never place a rear-facing infant restraint in the front seat of any vehicle equipped with a passenger air bag. See the Owner's Manual and the child safety seat instructions for more safety information.

Impala 2LT in Crystal Red Tintcoat
(extra-cost color) with available features.



ONSTAR AUTOMATIC CRASH RESPONSE!

In a crash, built-in sensors can automatically alert a specially trained OnStar Advisor, who is immediately connected into your Impala to see if you need help – even if you can't ask for it. Advisors can use GPS technology to pinpoint your exact location and request emergency help. OnStar is standard for six months. Information Pr

REMOTELINK KEY FOB SERVICES. These services are a component of the OnStar RemoteLink® app² which gives you access to features such as the available factory-installed remote vehicle starter system as well as locking and unlocking your doors – even when miles away from your vehicle. They come standard for five years on OnStar-equipped 2015 vehicles.

¹ Visit onstar.com for details and system limitations. OnStar acts as a link to existing emergency service providers. Not all vehicles may transmit all crash data. ² Available on select Apple, Android, BlackBerry and Windows devices. Services vary by device, vehicle and conditions. Requires active OnStar subscription, which is standard for six months.



PERFORMANCE



305 ^{HP} / **264** ^{LB.-FT.} **TORQUE** / **6.8** ^{SECONDS} **0-60**

305-HP 3.6L V6 ENGINE.

EPA-estimated 29 MPG highway.

Direct Injection improves power and efficiency while lowering emissions.

Variable Valve Timing provides near-peak torque over a wider rpm range.



196-HP ECOTEC 2.5L 4-CYLINDER ENGINE. This engine combines Direct Injection, Variable Valve Timing and new stop/start technology to help save on gas! Stop/start technology can automatically shut off the engine when stopped and enables a smooth transition when the brake pedal is released.



PRECISION HANDLING. Premium electric rack-and-pinion steering provides crisp, responsive handling. The tight steering radius is enhanced by a variable-effort feature, which increases power assistance during low-speed maneuvers.



NEW BI-FUEL IMPALA. Meet the only full-size sedan in America capable of running on gasoline or compressed natural gas (CNG), which costs less at the pump and significantly reduces carbon dioxide emissions. Available late 2014.

¹EPA-estimated 22 MPG city/31 highway.

PEACE OF MIND

Impala LTZ in Blue Velvet Metallic
with available features.



“BEST LARGE CAR FOR THE MONEY.”

— U.S. NEWS & WORLD REPORT ON 2014 IMPALA

¹ Covers only scheduled oil changes with filter and tire rotations according to your new vehicle's recommended maintenance schedule for up to 2 years or 24,000 miles, whichever comes first. Does not include air filters. Maximum of four service events. See participating dealer for other restrictions and complete details. ² Whichever comes first. See dealer for details. ³ Access is available for five years from the date of vehicle delivery and is transferable. Does not include any emergency services or other OnStar services. See onstar.com for details and system limitations. ⁴ Access is available for five years from the date of vehicle delivery and is transferable. Does not include any emergency services or other OnStar services. To cancel RemoteLink Key Fob Services or if your vehicle is sold, it is important to contact an OnStar Advisor. See onstar.com/mobile for full details. ⁵ Capabilities vary by model. Visit onstar.com for details and system limitations. ⁶ Devices must be WPA2-compliant with active OnStar service and data plan. Wi-Fi devices manufactured prior to 2006 may not be compatible. Please consult your device manufacturer for information regarding the WPA2 security protocol and Wi-Fi device compatibility. Visit onstar.com for details and system limitations. ⁷ Visit onstar.com for coverage map, details and system limitations. Services vary by model and conditions.



**COMPLETE
CARE**

WE'RE WITH YOU ALL THE WAY. Chevrolet Complete Care reflects our commitment to you and your new Impala. We've got you covered with 2 years of included Scheduled Maintenance¹ and 5 years of Roadside Assistance and Courtesy Transportation.²

ONSTAR BASIC PLAN. Stay connected to everyone and everything that matters with the OnStar Basic Plan³ included with your Impala. You'll get OnStar RemoteLink[®] Key Fob Services,⁴ which allows you to start your car from afar with the available factory-installed remote vehicle starter system. It also lets you lock and unlock your doors, and activate your horn and lights from anywhere – using your smartphone or other mobile device. Plus, when you opt in for OnStar Vehicle Diagnostics,⁵ we'll run monthly checks of your vehicle's engine, transmission, antilock brakes and more. And if you sign up for Dealer Maintenance Notification, we can send your diagnostic report directly to your preferred dealer to make scheduling service simple. Available OnStar 4G LTE with Wi-Fi gives you access to a high-speed 4G LTE Internet connection⁶ and an available built-in mobile Wi-Fi hotspot⁶ that can connect up to seven devices. For Emergency Services, Stolen Vehicle Assistance and other Advisor-based services, see additional OnStar plans.

YOUR COMPREHENSIVE OWNER BENEFIT PROGRAM.

2 years/24,000 miles of included Scheduled Maintenance.¹

5 years/100,000 miles of Roadside Assistance² and Courtesy Transportation.²

5-year/100,000-mile Powertrain Limited Warranty.²

3-year/36,000-mile Bumper-to-Bumper Warranty.²

6 years/100,000 miles of Rust-Through Protection.²

5 years of OnStar Basic Plan³ including RemoteLink Key Fob Services.⁴

6 months of OnStar Directions & Connections[®] Plan.⁷



COLORS



BLACK



BLUE VELVET METALLIC¹



SILVER TOPAZ METALLIC^{1,2}



RED ROCK METALLIC^{3,4}



CRYSTAL RED TINTCOAT^{3,4,5}



CHAMPAGNE SILVER METALLIC



ASHEN GRAY METALLIC⁶



SILVER ICE METALLIC⁹



IRIDESCENT PEARL TRICOAT^{5,7}



SUMMIT WHITE^{8,8}

WHEELS



18" Steel with Fascia-Spoke Wheel Cover
(Standard on LS and 2FL)



18" Painted-Aluminum
(Standard on LT)



19" Painted-Aluminum
(Available on 1LT and 2LT)⁹



19" Machined-Face Aluminum
(Standard on LTZ)



20" Aluminum
(Available on LTZ)¹⁰

DEALER-INSTALLED ACCESSORIES

PERSONALIZE YOUR IMPALA AT CHEVROLET.COM/ACCESSORIES



All-Weather Floor Mats



Cargo Mat



Chrome Mirror Caps



Remote Start

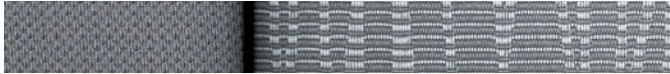


Spoiler (all exterior colors)

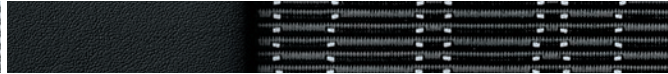
¹ Not available on 2FL and 3LT. ² Late availability. ³ Not available with Jet Black/Mojave interior. ⁴ Not available on LS and 2FL. ⁵ Extra-cost color. ⁶ Not available with Jet Black/Brownstone interior. ⁷ Available only on 1LT, 2LT and LTZ. ⁸ Not available on LTZ. ⁹ Requires available Premium Audio and Sport Wheels Package. ¹⁰ Requires available Chevrolet MyLink Radio with Navigation.



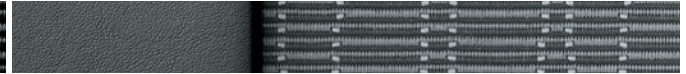
FABRICS



Jet Black/Dark Titanium-Color Premium Cloth¹



Jet Black Premium Cloth/Leatherette²



Jet Black/Dark Titanium-Color Premium Cloth/Leatherette²



Jet Black Sueded Microfiber³



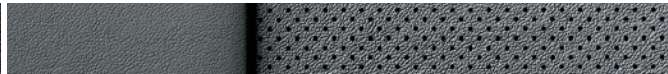
Jet Black/Dark Titanium-Color Sueded Microfiber³



Jet Black/Brownstone Sueded Microfiber³



Jet Black Leather Appointments⁴



Jet Black/Dark Titanium-Color Leather Appointments⁴



Jet Black/Mojave Leather Appointments⁴

¹ Standard on LS and 2FL. ² Standard on LT and 3LT. ³ Available on LT and 3LT. Requires available Premium Seating Package on 1LT and 2LT. ⁴ Standard on LTZ.

SELECT VEHICLE FEATURES

IMPALA LS

ECOTEC® 2.5L direct injected 4-cylinder engine with stop/start technology

6-speed automatic transmission

10 air bags¹

OnStar Directions & Connections® Plan² standard for the first six months

StabiliTrak® Electronic Stability Control System

Hill Start Assist

18" steel wheels with fascia-spoke wheel covers

Projector-beam halogen headlamps

Outside power-adjustable black mirrors

Acoustic-laminated windshield

Rear window defogger

AM/FM stereo with 4.2-inch diagonal color display, CD player and auxiliary input jack

SiriusXM Satellite Radio³ All Access Package with 3-month trial subscription

Bluetooth® wireless technology⁴ for select phones

6-speaker sound system with 100-watt amplifier

USB port⁵ in center console

OnStar with 4G LTE Wi-Fi hotspot for up to 7 devices⁶ standard for 3 months or 3 GB (whichever comes first)

Driver Information Center with full-color, high-resolution display, includes trip/fuel information, vehicle information and vehicle settings

Remote Keyless Entry

Single-zone air conditioning system

Cruise control with Set and Resume Speed

Steering wheel-mounted audio and cruise controls

Tilt/telescopic steering column

Power windows with driver express-up, express-down on all windows

Premium Cloth seating with 60/40 split-folding rear seat

8-way power-adjustable driver seat

Carpeted front and rear floor mats

IMPALA 2FL BI-FUEL CNG In addition to or replacing LS features, 2FL includes:

3.6L DOHC V6 engine with Bi-Fuel Compressed Natural Gas (CNG) fuel system

IMPALA LT In addition to or replacing LS features, LT includes:

18" painted-aluminum wheels

Outside heated power-adjustable mirrors with body-color caps, turn signal indicators and ground illumination

IMPALA LT (CONTINUED)

Chevrolet MyLink⁷ Radio with 8-inch diagonal color touch-screen with motorized power up/down and hidden storage

Bluetooth audio streaming⁴

Three USB ports:⁵ two in center console, one behind radio touch-screen

SD card reader

Dual-zone automatic climate control

Floor console with covered storage and rear-seat vents

Power-adjustable passenger-seat lumbar control

4-way adjustable front-seat head restraints

Foldable rear-seat head restraints

Leather-wrapped steering wheel and shift knob

Compass display in Driver Information Center

IMPALA 3LT BI-FUEL CNG In addition to or replacing LT features, 3LT includes:

3.6L DOHC V6 engine with Bi-Fuel Compressed Natural Gas (CNG) fuel system

IMPALA LTZ In addition to or replacing LT features, LTZ includes:

Dual-outlet exhaust with bright tips, integrated into fascia

Advanced safety features: Forward Collision Alert, Rear Cross Traffic Alert, Lane Departure Warning and Side Blind Zone Alert

Upper and lower LED daytime running lamps

High-intensity discharge (HID) headlamps

Outside heated power-adjustable mirrors with chrome caps, turn signal indicators and ground illumination

19" machined-face aluminum wheels

Rear vision camera and Rear Park Assist

Chrome door handles with body-color strip

Lower bodyside chrome moldings

Keyless Access with Push-Button Start

Remote vehicle starter system

Leather-appointed seating

8-way power-adjustable front passenger seat

Heated front seats

Interior ambient lighting

Cargo net

SPECIFICATIONS

● STANDARD ○ AVAILABLE – NOT AVAILABLE

	LS/2FL	1LT/ 2LT/3LT	LTZ
EXTERIOR			
Glass: Acoustic-laminated front-side and windshield	●	●	●
Mirrors: Power-adjustable, manual-folding, black Heated, power-adjustable, manual-folding with integrated turn signal indicators and ground illumination; body-color caps	●	–	–
Heated, power-adjustable, manual-folding with integrated turn signal indicators and ground illumination; chrome caps	–	●	–
Heated, power-adjustable, manual-folding with integrated turn signal indicators and ground illumination; chrome caps	–	–	●
ENGINE/CHASSIS			
Brake rotors: Duralife™ with corrosion-resistant technology	●	●	●
Engine: ECOTEC 2.5L DOHC 4-cylinder with Direct Injection, Variable Valve Timing and intake Variable Valve Lift; 196 hp @ 6300 rpm, 186 lb.-ft. torque @ 4400 rpm	○ ⁸	○ ⁹	●
3.6L DOHC V6 with Direct Injection, Variable Valve Timing and intake Variable Valve Lift; 305 hp @ 6800 rpm, 264 lb.-ft. torque @ 5200 rpm	–	○ ¹⁰	○ ¹¹
3.6L DOHC V6 with Variable Valve Timing and Bi-Fuel Compressed Natural Gas (CNG) fuel system, operates on gas and CNG; 245 hp @ 6000 rpm, 231 lb.-ft. torque @ 5200 rpm running on gas; 206 hp @ 5600 rpm, 206 lb.-ft. torque @ 4800 rpm running on CNG	○ ¹²	○ ¹³	–
Exhaust system: Single-outlet, hidden	●	–	–
Dual-outlet, hidden	○ ¹²	●	–
Dual-outlet with bright tips, integrated into fascia	–	–	●
Steering: Power, electric-assisted, variable-assist	●	●	●
Transmission: 6-speed automatic with overdrive and manual mode	●	●	●

¹ Always use safety belts and the correct restraint for your child's age and size. Even in vehicles equipped with the Passenger Sensing System, children are safer when properly secured in a rear seat in the appropriate infant, child or booster seat. Never place a rear-facing infant restraint in the front seat of any vehicle equipped with a passenger air bag. See the Owner's Manual and the child safety seat instructions for more safety information. ² Visit onstar.com for coverage map, details and system limitations. Services vary by model and conditions.

³ If you subscribe after your trial period, subscriptions are continuous until you call SiriusXM to cancel. See SiriusXM Customer Agreement for complete terms at siriusxm.com. Other fees and taxes will apply. All fees and programming subject to change. For more information about NavTraffic, visit siriusxm.com/navtraffic. For more information about Travel Link, visit siriusxm.com/travellink. XM satellite service is available only in the 48 contiguous United States and D.C. ⁴ Go to gmtotalconnect.com to find out which phones are compatible with the vehicle. ⁵ Not compatible with all devices. ⁶ Devices must be WPA2-compliant with active OnStar service and data plan. Wi-Fi devices manufactured prior to 2006 may not be compatible. Please consult your device manufacturer for information regarding the WPA2 security protocol and Wi-Fi device compatibility. Visit onstar.com for details and system limitations. ⁷ Full functionality requires compatible Bluetooth and smartphone, and USB connectivity for some devices. ⁸ Requires LS. ⁹ Requires 1LT. ¹⁰ Requires 2LT. ¹¹ Requires 2LTZ.

¹² Requires 2FL. ¹³ Requires 3LT.



SPECIFICATIONS (CONTINUED)

	LS/2FL	1LT/ 2LT/3LT	LTZ
SAFETY & SECURITY			
10 air bags: ¹ Dual-stage frontal, thorax side-impact and knee for driver and front passenger (includes Passenger Sensing System); thorax side-impact for rear outboard seating positions; head-curtain side-impact for front and rear outboard seating positions	●	●	●
Adaptive Cruise Control with Front Automatic Braking	–	–	○ ²
Brakes: 4-wheel antilock, 4-wheel disc with Panic Brake Assist	●	●	●
Daytime running lamps: Upper LED	●	●	–
Door locks: Power-programmable with lockout protection and rear-door child safety locks	●	●	●
LATCH (Lower Anchors and Top tethers for Children) system	●	●	●
OnStar Directions & Connections Plan with Automatic Crash Response ³ ; standard for the first six months	●	●	●
StabiliTrak Electronic Stability Control System with Brake Assist	●	●	●
Theft-deterrent system	●	●	●
Tire Pressure Monitoring System ⁴	●	●	●
INTERIOR			
Assist handles: Driver, front passenger and rear outboard	●	●	●
Climate control: Single-zone, manual	● ⁵	–	–
Dual-zone, automatic	–	●	●
Console: Floor, with storage compartment	●	–	–
Floor, with covered storage	–	●	●
Power outlets: Three auxiliary, integrated in center stack, inside center console and on rear of center console	●	●	●
Sunroof: Power, tilt-sliding with additional fixed rear skylight and power sunshade	–	○ ⁶	○

● STANDARD ○ AVAILABLE – NOT AVAILABLE

	LS/2FL	1LT/ 2LT/3LT	LTZ
SEATING			
Front buckets with reclining seatbacks; rear 60/40 split-folding seatback	●	●	●
Head restraints: 2-way adjustable, front	●	–	–
4-way adjustable, front	–	●	●
2-way adjustable, outboard rear	●	–	–
2-way adjustable, folding, outboard rear	○ ⁷	–	●
Seats: Premium Cloth	●	–	–
Premium Cloth/Leatherette	–	●	–
Sueded microfiber	–	○ ⁸	–
Leather-appointed	–	–	●
Seat adjuster: Driver 8-way power	●	●	●
Driver 4-way power lumbar control	●	●	●
Front passenger 4-way manual	●	●	–
Front passenger 8-way power	–	○ ^{8,9}	●
Front passenger 2-way power lumbar control	–	●	●
Heated front seats	–	○ ⁸	●
AUDIO SYSTEMS			
AM/FM stereo with 4.2-inch diagonal color display, CD player and auxiliary input jack	●	–	–
Chevrolet MyLink ¹⁰ Radio: AM/FM stereo, smartphone integration, Siri Eyes Free, ¹¹ Text Message Alerts, ¹² Bluetooth audio streaming, ¹³ Gracenote [®] database, natural language voice recognition, 8-inch diagonal color touch-screen display with motorized power up/down and hidden lockable storage	–	●	●
Chevrolet MyLink ¹⁰ Radio with Navigation: Includes features listed above plus enhanced GPS navigation system and SiriusXM NavTraffic ¹⁴ and Travel Link ¹⁴ with 3-month trial subscription	–	○ ¹⁵	○ ¹⁶
SiriusXM Satellite Radio ¹⁴ All Access Package with 3-month trial subscription	●	●	●
SD card reader	–	●	●
OnStar with 4G LTE and mobile Wi-Fi hotspot for up to 7 devices ¹⁷ standard for 3 months or 3 GB (whichever comes first)	●	●	●

	LS/2FL	1LT/ 2LT/3LT	LTZ
WHEELS			
18" steel with fascia-spoke wheel cover	●	–	–
18" painted-aluminum	–	●	–
19" painted-aluminum	–	○ ¹⁸	–
19" machined-face aluminum	–	–	●
20" aluminum	–	–	○ ¹⁹
PACKAGES			
LS Convenience Package: Rear Park Assist, foldable outboard rear-seat head restraints and cargo net	○ ²⁰	–	–
Convenience Package: Rear Park Assist, rear vision camera, auto-dimming inside rearview mirror, remote vehicle starter system, Universal Home Remote, and premium carpeted front and rear floor mats and trunk mat	–	○ ²¹	–
Advanced Safety Package: Forward Collision Alert, Rear Cross Traffic Alert, Lane Departure Warning and Side Blind Zone Alert	–	○ ²²	–
Premium Seating Package: Heated front seats, 8-way power front passenger seat adjuster, sueded microfiber seat inserts and cargo convenience net	–	○ ²³	–
Premium Audio and Sport Wheels Package: 11-speaker Bose [®] Centerpoint [®] Surround Sound premium sound system, interior ambient lighting, 120-volt power outlet, 19" painted-aluminum wheels and rear spoiler	–	○ ²⁴	–
Navigation Package: Chevrolet MyLink ¹⁰ Radio with Navigation and Keyless Access with Push-Button Start	–	○ ¹⁸	–
Comfort and Convenience Package: Ventilated front seats; heated steering wheel; power tilt and telescoping steering column; memory for driver seat, outside mirror and steering column settings; Universal Home Remote; premium carpeted front and rear floor mats; carpeted trunk mat; auto-dimming inside rearview mirror	–	–	○
Premium Audio Package: 11-speaker Bose Centerpoint Surround Sound premium sound system and 120-volt power outlet	–	–	○ ²⁵
Power and Light Package: 120-volt power outlet and interior ambient lighting	–	○ ²⁶	–
Rear Vision Convenience Package: Rear vision camera, Rear Park Assist and remote vehicle starter system	–	○ ²⁷	–

¹ Always use safety belts and the correct restraint for your child's age and size. Even in vehicles equipped with the Passenger Sensing System, children are safer when properly secured in a rear seat in the appropriate infant, child or booster seat. Never place a rear-facing infant restraint in the front seat of any vehicle equipped with a passenger air bag. See the Owner's Manual and the child safety seat instructions for more safety information. ² Requires available V6 engine, Comfort and Convenience Package, Premium Audio Package, Chevrolet MyLink Radio with Navigation, and 20" wheels. ³ Visit onstar.com for details and system limitations. OnStar acts as a link to existing emergency service providers. Not all vehicles may transmit all crash data. ⁴ Excludes spare tire. ⁵ Electronic on 2FL. ⁶ Requires 1LT or 2LT and available Convenience Package, Advanced Safety Package, Premium Seating Package, Premium Audio and Sport Wheels Package, or Navigation Package. ⁷ Requires available LS Convenience Package on 1LS. ⁸ Requires available Premium Seating Package on 1LT and 2LT. ⁹ Requires available heated seats on 3LT. ¹⁰ Full functionality requires compatible Bluetooth and smartphone, and USB connectivity for some devices. ¹¹ Requires available Chevrolet MyLink and compatible iPhone running iOS 6 or later. ¹² Requires a compatible smartphone with Bluetooth profile (M.A.P.) and applicable text messaging features. Visit gmttotalconnect.com for vehicle and smartphone eligibility. ¹³ Go to gmttotalconnect.com to find out which phones are compatible with the vehicle. ¹⁴ If you subscribe after your trial period, subscriptions are continuous until you call SiriusXM to cancel. See SiriusXM Customer Agreement for complete terms at siriusxm.com. Other fees and taxes will apply. All fees and programming subject to change. For more information about NavTraffic, visit siriusxm.com/navtraffic. For more information about Travel Link, visit siriusxm.com/travellink. XM satellite service is available only in the 48 contiguous United States and D.C. ¹⁵ Requires available Navigation Package. ¹⁶ Requires available Premium Audio Package. ¹⁷ Devices must be WPA2-compliant with active OnStar service and data plan. Wi-Fi devices manufactured prior to 2006 may not be compatible. Please consult your device manufacturer for information regarding the WPA2 security protocol and Wi-Fi device compatibility. Visit onstar.com for details and system limitations. ¹⁸ Requires 1LT or 2LT and available Premium Audio and Sport Wheels Package. ¹⁹ Requires available Comfort and Convenience Package, Premium Audio Package, and Chevrolet MyLink Radio with Navigation. ²⁰ Requires LS. ²¹ Requires 1LT or 2LT. ²² Requires 1LT or 2LT and available Convenience Package. ²³ Requires 1LT or 2LT and available Advanced Safety Package. ²⁴ Requires 1LT or 2LT and available Premium Seating Package. ²⁵ Requires available Comfort and Convenience Package. ²⁶ Requires 3LT and available heated front seats. ²⁷ Requires 3LT.



DIMENSIONS



62.2"
73.0"



111.7"
201.3"



62.0"
58.9"

MAXIMUM CAPACITIES

EPA-ESTIMATED FUEL ECONOMY

2.5L 4-cylinder	22 MPG city/31 highway/25 combined
3.6L V6	19 MPG city/29 highway/22 combined
3.6L V6 (emissions states)	18 MPG city/28 highway/21 combined
3.6L V6 Bi-Fuel CNG	Official EPA estimates not yet available

FUEL TANK (APPROXIMATE)

18.5 gallons (LS, 1LT, 2LT, LTZ)
10 gallons (2FL, 3LT)

PASSENGER VOLUME

105.0 cubic feet/seats 5

CARGO VOLUME¹

18.8 cubic feet (LS, 1LT, 2LT, LTZ)
10 cubic feet (2FL, 3LT)

OWNERSHIP EXTRAS



CHEVROLET.COM/WARRANTY



CHEVROLET.COM/ACCESSORIES



ONSTAR.COM



SIRIUSXM.COM

WARRANTY

100,000-MILE/5-YEAR TRANSFERABLE POWERTRAIN LIMITED WARRANTY Every 2015 Chevrolet passenger car, light-duty truck, SUV and crossover comes with a 100,000-mile/5-year (whichever comes first) transferable Powertrain Limited Warranty. Plus, you get 100,000 miles/5 years (whichever comes first) of the 24/7 Roadside Assistance Program, the Courtesy Transportation Program, and much more. See dealer for details.

NEW VEHICLE LIMITED WARRANTY GM vehicles registered in the USA are covered for 36,000 miles/3 years (whichever comes first). The complete vehicle is covered, including tires, towing to your nearest Chevrolet dealership and cosmetic corrosion resulting from defects. Repairs will be made to correct any vehicle defect, and most warranty repairs will be made at no charge. In addition, rust-through corrosion will be covered for 100,000 miles/6 years (whichever comes first). See dealer for details.

¹ Cargo and load capacity limited by weight and distribution.



Information Provided by:
DEALER
E-PROCESS

IMPORTANT INFORMATION

CHEVROLET OWNER CENTER (MY.CHEVROLET.COM) Everything you need to know. Anything you need to do. Your Chevrolet Owner Center makes it easy. Create your account today to get the most out of your new vehicle. Get special alerts and offers, schedule service, review your maintenance schedule, and view how-to videos specifically for your vehicle. All online, anytime. Visit the Owner Center today to register or take a tour.

CHEVROLET COMPLETE CARE Every new 2015 Chevrolet Impala comes with 2 years/24,000 miles of scheduled maintenance that includes oil and filter changes, tire rotations and multipoint vehicle inspections. Covers only scheduled oil changes with filter and tire rotations according to your new vehicle's recommended maintenance schedule for up to 2 years or 24,000 miles, whichever comes first. Does not include air filters. Maximum of four service events. See participating dealer for other restrictions and complete details.

ENGINES Chevrolet products are equipped with engines produced by GM Powertrain or other suppliers to GM worldwide. The engines in Chevrolet products may also be used in other GM makes and models.

ASSEMBLY Chevrolet vehicles and their components are assembled or produced by different operating units of General Motors, its subsidiaries or suppliers to GM worldwide. We sometimes find it necessary to produce Chevrolet vehicles with different or differently sourced components than originally scheduled. Since some options may be unavailable when your vehicle is assembled, we suggest you verify that your vehicle includes the equipment you ordered and that, if there were changes, they are acceptable to you.

ONSTAR OnStar services require vehicle electrical system (including battery), wireless service and GPS satellite signals to be available and operating for features to function properly. OnStar acts as a link to existing emergency service providers. Subscription Service Agreement required. Call 1-888-4ONSTAR (1-888-466-7827) or visit onstar.com for OnStar Terms and Conditions, Privacy Policy, details and system limitations.

A NOTE ON CHILD SAFETY Always use safety belts and the correct restraint for your child's age and size. Even in vehicles equipped with the Passenger Sensing System, children are safer when properly secured in a rear seat in the appropriate infant, child or booster seat. Never place a rear-facing infant restraint in the front seat of any vehicle equipped with a passenger air bag. See the Owner's Manual and child safety seat instructions for more safety information.

IMPORTANT WORDS ABOUT THIS CATALOG We have tried to make this catalog comprehensive and factual. We reserve the right, however, to make changes at any time, without notice, in prices, colors, materials, equipment, specifications, models and availability. Specifications, dimensions, measurements, ratings and other numbers in this catalog and other printed materials provided at the dealership or affixed to vehicles are approximations based on design and engineering drawings, prototypes and laboratory tests. Your vehicle may differ due to variations in manufacture and equipment. Since some information may have been updated since the time of printing, please check with your Chevrolet dealer for complete details. Chevrolet reserves the right to lengthen or shorten the model year for any product for any reason or to start and end model years at different times. Certain vehicle features may lose their usefulness over time due to obsolescence from technological changes. Unless otherwise noted, all claims based on GM Large Car Sedan segment and latest available competitive information. Excludes other GM vehicles.

FLEET ORDERS Some standard content may be deleted on fleet orders. See dealer for details.

CHEVROLET OWNERSHIP EXPERIENCE Chevrolet is committed to enhancing the vehicle shopping and ownership experience through a wide array of programs. Visit chevrolet.com to build and price, find a vehicle, request a quote, compare vehicles, find financial tools or track your vehicle order. You'll also find information about 24-hour Roadside Assistance, Courtesy Transportation, Customer Assistance, GM Mobility, safety and current incentives.

CHEVROLET.COM/SAFETY Chevrolet is committed to keeping you and your family safe – from the start of your journey to your destination. That's why every Chevrolet is designed with a comprehensive list of safety and security features to help give you peace of mind.

GMMOBILITY.COM (1-800-323-9935) GM MobilitySM offers financial assistance for eligible adaptive equipment to make automotive travel easier for persons with disabilities or special transportation needs. To learn more about special GM Mobility offers, visit gmmobility.com.

THE BUYPOWER CARD The Chevrolet BuyPower Card – Every purchase you make with the BuyPower Card from Capital One* helps you earn toward an eligible new Chevrolet, Buick, GMC or Cadillac vehicle. There's no limit on the amount you can earn or redeem, and your Earnings don't expire. Visit chevroletbuypowercard.com/catalogs.

* Capital One, N.A. is the issuer of the BuyPower Card. General Motors ("GM") is responsible for the operation and administration of the Earnings program.



TWITTER.COM/CHEVROLET



YOUTUBE.COM/CHEVROLET



FACEBOOK.COM/CHEVROLET

GM, the GM logo, Chevrolet, the Chevrolet logo, and the slogans, emblems, vehicle model names, vehicle body designs and other marks appearing in this catalog are the trademarks and/or service marks of General Motors, its subsidiaries, affiliates or licensors. ©2014 OnStar. All rights reserved. SiriusXM and all related marks and logos are trademarks of Sirius XM Radio Inc. The Bluetooth word mark is a registered trademark owned by Bluetooth SIG, Inc., and any use of such mark by Chevrolet is under license. Bose and Centerpoint are registered trademarks of the Bose Corp.

©2014 General Motors. All rights reserved. August 2014



Information Provided by:
DEALER
E-PROCESS



FIND NEW ROADS™

CHEVROLET.COM



Information Provided by:

DEALER
E-PROCESS