

SONIC 2015

CHEVROLET





Sonic RS Hatchback in Red Hot.
Sonic RS Sedan in Silver Ice Metallic.

FIRST THINGS FIRST... THE 2015 SONIC IS HERE.

"This is a ton of fun for the money," says Autoweek. And while Sonic is a blast to drive, it's not kidding around either. With an available turbocharged engine, Sonic offers up to 40 MPG on the highway.¹ It's the first small car in its class² to receive a 5-Star Overall Vehicle Score for safety from the NHTSA.³ And it's also the only small car built right here in the United States.⁴ Sonic is ready. Are you?

FIND NEW ROADS™

¹ EPA estimate for LT/LTZ with available 1.4L turbocharged engine and 6-speed manual transmission. ² Based on GM Small Car segment. ³ Government 5-Star Safety Ratings are part of the National Highway Traffic Safety Administration's (NHTSA's) New Car Assessment Program (www.SaferCar.gov). ⁴ Assembled in Orion Township, Michigan, of U.S. and globally sourced parts.



EXTERIOR DESIGN



**“... ONE OF THE VERY BEST SUBCOMPACTS
IN THE SEGMENT. CHECK IT OUT.”**

— KELLEY BLUE BOOK'S KBB.COM¹

Sonic RS Sedan in Silver Ice Metallic
with available dealer-installed
Chevrolet Accessories.

¹ From 2014 Chevrolet Sonic KBB Expert Review on Kelley Blue Book's KBB.com. Kelley Blue Book is a registered trademark of Kelley Blue Book Co., Inc.



SONIC DUSK

Sonic Dusk in
Ashen Gray Metallic.



ALL ITS OWN. Enjoy the refined style of a premium sedan with Sonic Dusk. The subtle Ashen Gray Metallic exterior is contrasted by matte-finish grille bezels, door handle inserts and decklid trim. A rear spoiler and 18-inch aluminum wheels with Midnight Silver finish complete the modern aesthetic.

MOJAVE STYLE. Inside, Jet Black leather-appointed seats with sueded microfiber accents and Mojave inserts set the tone for a pure driving experience. Mojave stitching and contrasting door and instrument panel accents enhance the overall mood.

THE POWER IS YOURS. Under the hood, the ECOTEC® 1.4L turbocharged 4-cylinder engine with Variable Valve Timing gives you 138 horsepower and 148 lb.-ft. of torque. Standard 4-wheel disc brakes with ABS offer sure-footed stopping power.



PREMIUM APPOINTMENTS EVERYWHERE YOU LOOK.

- 1. Sonic Dusk features its own color-coordinated Jet Black and Mojave interior.*
- 2. The 18-inch aluminum wheels with Midnight Silver finish add an upscale touch.*
- 3. Leather-wrapped steering wheel and contrast stitching add to the expressive style.*

INTERIOR DESIGN



Sonic RS interior in Jet Black with available features.



Sonic RS interior in Jet Black shown with red stitching and embossed RS logos.



AMPED UP FROM THE INSIDE OUT.

1. Racing-inspired aluminum sport pedals on Sonic RS add a custom touch.

2. Chrome-accented shift knob with red stitching is exclusive to Sonic RS.

3. With unique motorcycle-inspired instrumentation/graphics, RS communicates flair and precision.



Information Provided by:

DEALER
E-PROCESS



Sonic Hatchback with
Jet Black/Dark Titanium interior.

MORE SPACE AND MORE WAYS TO USE IT.

Sonic Hatchback offers seating for five, plus up to 19 cubic feet of cargo space!

Fold down the 60/40 split-folding rear seat in Sonic Hatchback for up to 47.7 cubic feet of cargo space!

Sonic Sedan has 14.9 cubic feet of trunk storage¹ – more than Honda Civic and Toyota Corolla.

¹ Cargo and load capacity limited by weight and distribution.



Information Provided by:
DEALER
E-PROCESS



Sonic Sedan in Crystal Red Tintcoat (extra-cost color).

TECHNOLOGY

Sonic LTZ Hatchback in Black Granite Metallic (extra-cost color) with available features and dealer-installed Chevrolet Accessories.



Connected by  4G LTE

**WI-FI IN YOUR SONIC?
IT'S HERE.**

LEADING THE WAY. Chevrolet is the first and only car company to bring built-in 4G LTE Wi-Fi to cars, trucks and crossovers, offering drivers the ability to seamlessly connect their smart devices and vehicles to the Internet.¹

THE ULTIMATE MOBILE WI-FI HOTSPOT. Whenever your Sonic is on, available OnStar 4G LTE Wi-Fi is on too. It offers great signal quality and bandwidth for up to seven devices!

FAST, EASY, RELIABLE. Available built-in OnStar with 4G LTE provides a better in-vehicle experience than your smartphone. Our stronger signal means you have a reliable connection. It's automatically on after initial setup and ready to connect to your mobile devices!

¹ Devices must be WPA2-compliant with active OnStar service and data plan. Wi-Fi devices manufactured prior to 2006 may not be compatible. Please consult your device manufacturer for information regarding the WPA2 security protocol and Wi-Fi device compatibility. Visit onstar.com for details and system limitations.



Information Provided by:
**DEALER
E-PROCESS**



TOUCH AND COMMAND.

CHEVROLET MYLINK. The available Chevrolet MyLink¹ Radio features a 7-inch diagonal full-color touch-screen display that lets you stay in tune with your Sonic. Connect your compatible smartphone via Bluetooth[®] wireless technology² and listen to music, get directions or make phone calls, all with the touch of a fingertip.

WIRELESS TECHNOLOGY. Bluetooth wireless technology² and steering wheel-mounted controls let you make, answer and end phone calls without ever taking your hands off the wheel. Bluetooth audio streaming is standard on LT, LTZ and RS models.

SOUNDS OF SONIC. Listen to commercial-free music, plus sports, exclusive talk, news and more through the 3-month trial of available SiriusXM Satellite Radio All-Access Package.³ With available Chevrolet MyLink,¹ stream your favorite audio services like TuneIn⁴ global Internet radio, Pandora[®] Internet Radio⁴ and Stitcher SmartRadio.^{TM4}

¹ Full functionality requires compatible Bluetooth and smartphone, and USB connectivity for some devices. MyLink on Sonic does not include functionality such as enhanced voice recognition, Gracenote and CD player. ² Go to gmtotalconnect.com to find out which phones are compatible with the vehicle. ³ Standard on LT, LTZ and RS. If you subscribe after your trial period, subscriptions are continuous until you call SiriusXM to cancel. See SiriusXM Customer Agreement for complete terms at siriusxm.com. Other fees and taxes will apply. All fees and programming subject to change. XM satellite service is available only in the 48 contiguous United States and D.C. ⁴ Data plan rates apply.



CONNECTED TO YOUR WORLD.



SIRI EYES FREE. If you have a compatible iPhone®, you can use Siri Eyes Free¹ to compose and read text messages, access your calendar, get game scores, check the weather and more.

BRINGGO. The available BringGo² navigation app offers plenty of easy-to-use features that let you discover new destinations without the stress of getting lost. Just download the app to your compatible smartphone and connect with the available Chevrolet MyLink³ Radio.

ONSTAR REMOTELINK. Use the OnStar RemoteLink⁴ app to remotely start your Sonic with the available factory-installed remote vehicle starter system. It can even lock or unlock your doors and help you find your car by honking your horn or flashing your lights.

¹ Requires available Chevrolet MyLink and compatible iPhone running iOS 6 or later. ² Requires available Chevrolet MyLink. BringGo app must be purchased separately. Requires compatible smartphone. Data plan rates apply. See dealer or call 1-855-4-SUPPORT (1-855-4-787-7678) for more information. ³ Full functionality requires compatible Bluetooth and smartphone, and USB connectivity for some devices. MyLink on Sonic does not include functionality such as enhanced voice recognition, Gracenote and CD player. ⁴ Available on select Apple, Android, BlackBerry and Windows devices. Services vary by device, vehicle and conditions. Requires active OnStar subscription, which is standard for six months.



ALL THE TECHNOLOGY. ALL THE TIME.

1. *OnStar Basic Plan¹ with RemoteLink Key Fob Services² keeps you connected for five years, at no additional cost.*
2. *myChevrolet mobile app³ is another way to connect to your Sonic.*
3. *Bluetooth[®] wireless technology⁴ lets you make and receive calls without ever taking your hands off the wheel.*

¹ Access is available for five years from the date of vehicle delivery and is transferable. Does not include any emergency services or other OnStar services. See onstar.com for details and system limitations. ² Access is available for five years from the date of vehicle delivery and is transferable. Does not include any emergency services or other OnStar services. To cancel OnStar RemoteLink Key Fob Services or if your vehicle is sold, it is important to contact an OnStar Advisor. See onstar.com/mobile for full details. ³ Requires Apple iOS 6 or Android platform. ⁴ Go to gmtotalconnect.com to find out which phones are compatible with the vehicle.

iPhone is a trademark of Apple Inc., registered in the U.S. and other countries.

PERFORMANCE

Sonic LTZ Hatchback in Silver Ice Metallic.



SONIC BRINGS IT ALL.

40 MPG ON THE HIGHWAY! Sonic offers a combination of power and efficiency that will leave you wondering how it's all possible. The ECOTEC® 1.4L turbocharged engine, standard on LTZ and available on LT, offers up to 40 MPG highway.¹

YOU WANT FAST? YOU GOT IT. On the test track, the turbocharged Sonic blurs from 0 to 60 in less than 8 seconds.² And with 138 horsepower and 148 lb.-ft. of torque, Sonic has all the passing and merging power you'll need.

DON'T HOLD BACK. The ECOTEC 1.8L I-4 engine with 5-speed manual transmission (standard on Sonic LS and LT) puts the control of driving back in your hands. This engine delivers 138 horsepower and 125 lb.-ft. of torque.

¹ Based on EPA estimate for LT/LTZ with available 1.4L turbocharged engine and 6-speed manual transmission.
² Achieved on a test track with 1.4L turbocharged engine and 6-speed manual transmission.



Information Provided by:

DEALER
E-PROCESS

RS. ALL THE FUN, TURBOCHARGED.



TURBOCHARGED RS PERFORMANCE.

After you take your friends for a ride, they may begin to show signs of Sonic envy. With the standard 1.4L turbocharged engine, sporty gear ratios (4.18 for manual and 3.53 for automatic), plus a lowered and stiffened suspension with performance-tuned dampers, RS puts you in charge.

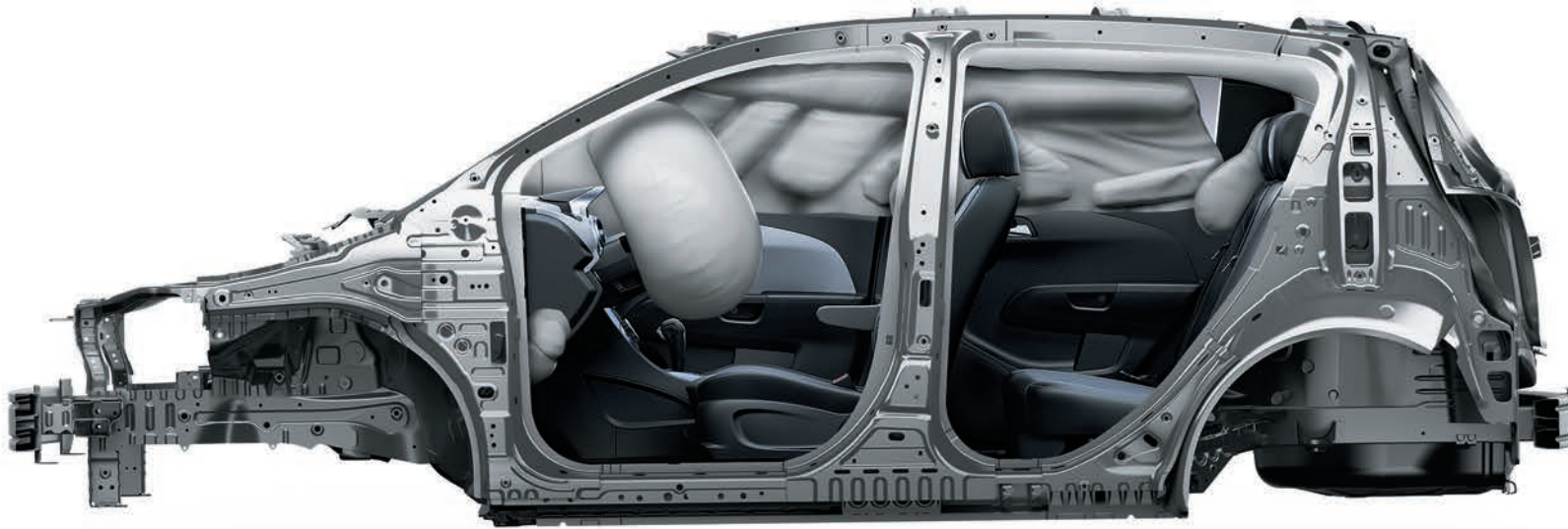


EXCLUSIVE RS STYLE. With stellar performance comes legendary looks. Sonic RS boasts aggressive rocker panel extensions and its own custom foglamps. Take hold of the leather-wrapped sport steering wheel, settle into the heated leather-appointed front bucket seats and let this adrenaline-pumping experience begin.



TUNED SUSPENSION. Sonic RS delivers the sharp-edged performance of a tuned sport sedan. This suspension lowers the center of gravity for optimized handling and an improved stance. And a special dealer-installed accessory suspension (shown) providing a lowered ride height is available on all models.

10 AIR BAGS. 5 STARS. THAT'S BEST-IN-CLASS.



¹ Based on GM Small Car segment. ² Government 5-Star Safety Ratings are part of the National Highway Traffic Safety Administration's (NHTSA's) New Car Assessment Program (www.SaferCar.gov). ³ Air bag inflation can cause severe injury or death to anyone too close to the air bag when it deploys. Be sure every occupant is properly restrained. Always use safety belts and the correct restraint for your child's age and size. Even in vehicles equipped with the Passenger Sensing System, children are safer when properly secured in a rear seat in the appropriate infant, child or booster seat. Never place a rear-facing infant restraint in the front seat of any vehicle equipped with a passenger air bag. See the Owner's Manual and the child safety seat instructions for more safety information.

A NEW STANDARD. Sonic offers safety ratings and safety technologies that are unsurpassed in its class. Sonic is the first small car¹ to receive a 5-Star Overall Vehicle Score for safety from the NHTSA.²

10 AIR BAGS. If a moderate-to-severe collision does occur, Sonic is designed to act fast – it's the first and only car in its class¹ with 10 standard air bags.³ Sensors throughout the vehicle determine how many

air bags deploy – including knee air bags for the driver and front passenger. And to add to this protection, the cabin is reinforced with high-strength steel throughout.



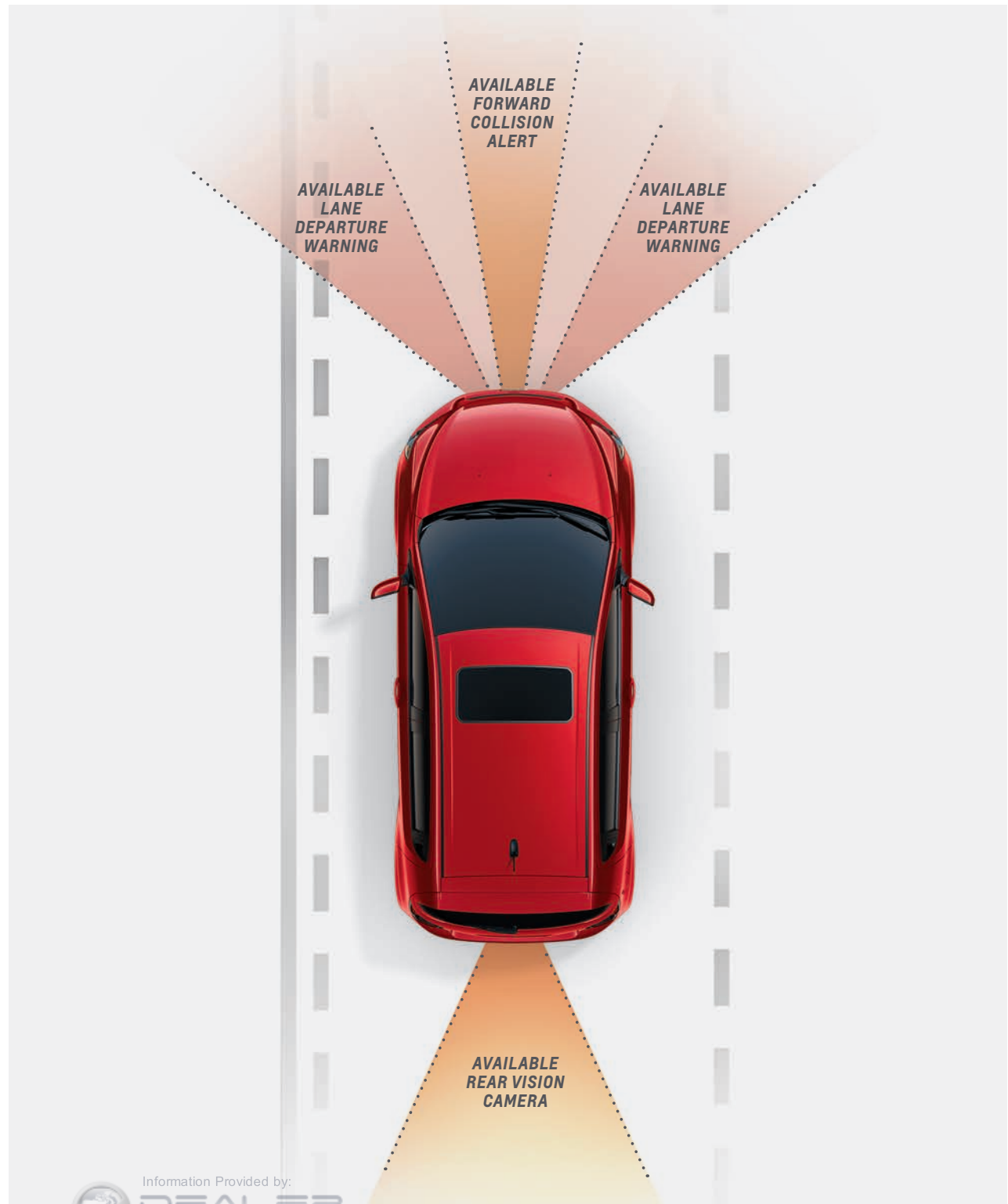
ADVANCED SAFETY PACKAGE. Sonic offers available Forward Collision Alert, which issues a warning sound to alert you to a possible collision, and Lane Departure Warning that alerts you if your Sonic begins to drift across lanes without signaling.

AUTOMATIC CRASH RESPONSE. In a crash, built-in sensors can automatically alert an OnStar Advisor, who is immediately connected into the vehicle to see if you need help. It's part of the OnStar Directions & Connections® Plan¹ – standard for the first six months.

REAR VISION CAMERA. Back up confidently with the available rear vision camera. When you shift into Reverse, the available Chevrolet MyLink² Radio with a 7-inch diagonal display allows you to see if anything is in your way. And when Sonic takes off, safety technology like the StabiliTrak® Electronic Stability Control System with Traction Control kicks in.

SAFETY STARTS WITH YOU. Safety features are no substitute for the driver's responsibility to operate the vehicle in a safe manner. The driver should remain attentive to traffic, surroundings and road conditions at all times. Read the vehicle Owner's Manual for more important safety information.

¹ Visit onstar.com for coverage map, details and system limitations. OnStar acts as a link to existing emergency service providers. Not all vehicles may transmit all crash data. ² Full functionality requires compatible Bluetooth and smartphone, and USB connectivity for some devices. MyLink on Sonic does not include functionality such as enhanced voice recognition, Gracenote and CD player.



Information Provided by:

DEALER
E-PROCESS

PEACE OF MIND



COMPLETE
CARE

WE'RE WITH YOU ALL THE WAY. Chevrolet Complete Care reflects our commitment to you and your new Sonic. We've got you covered with 2 years of included Scheduled Maintenance and 5 years of Roadside Assistance and Courtesy Transportation.

ONSTAR BASIC PLAN. Stay connected to everyone and everything that matters with the OnStar Basic Plan¹ included with your Sonic. You'll get OnStar RemoteLink[®] Key Fob Services², which allows you to start your car from afar with the available factory-installed remote vehicle starter system. It also lets you lock and unlock your doors and activate your horn and lights from anywhere – using your smartphone or other mobile device. Plus, when you opt in for OnStar Vehicle Diagnostics³, we'll run monthly checks of your vehicle's engine, transmission, antilock brakes and more. And if you sign up for Dealer Maintenance Notification, we can send your diagnostic report directly to your preferred dealer to make scheduling service simple. Available OnStar 4G LTE with Wi-Fi gives you access to a high-speed 4G LTE Internet connection⁴ and an available built-in mobile Wi-Fi hotspot⁴ that can connect up to seven devices. For Emergency Services, Stolen Vehicle Assistance and other Advisor-based services, see additional OnStar plans.

YOUR COMPREHENSIVE OWNER BENEFIT PROGRAM.

2 years/24,000 miles of included Scheduled Maintenance.⁵

5 years/100,000 miles of Roadside Assistance⁶ and Courtesy Transportation.⁶

5-year/100,000-mile Powertrain Limited Warranty⁶

3-year/36,000-mile Bumper-to-Bumper Warranty.⁶

6 years/100,000 miles of Rust-Through Protection.⁶

5 years of OnStar Basic Plan¹ including RemoteLink Key Fob Services.²

6 months of OnStar Directions & Connections[®] Plan.⁷

¹ Access is available for five years from the date of vehicle delivery and is transferable. Does not include any emergency services or other OnStar services. See onstar.com for details and system limitations. ² Access is available for five years from the date of vehicle delivery and is transferable. Does not include any emergency services or other OnStar services. To cancel RemoteLink Key Fob Services or if your vehicle is sold, it is important to contact an OnStar Advisor. See onstar.com/mobile for full details. ³ Capabilities vary by model. Visit onstar.com for details and system limitations. ⁴ Devices must be WPA2-compliant with active OnStar service and data plan. Wi-Fi devices manufactured prior to 2006 may not be compatible. Please consult your device manufacturer for information regarding the WPA2 security protocol and Wi-Fi device compatibility. Visit onstar.com for details and system limitations. ⁵ Covers only scheduled oil changes with filter and tire rotations according to your new vehicle's recommended maintenance schedule for up to 2 years or 24,000 miles, whichever comes first. Does not include air filters. Maximum of four service events. See participating dealer for other restrictions and complete details. ⁶ Whichever comes first. See dealer for details. ⁷ Visit onstar.com for coverage map, details and system limitations. Services vary by model and conditions.



COLORS



BLACK GRANITE METALLIC¹



BLUE VELVET METALLIC^{2,3}



DRAGON GREEN METALLIC^{1,2,4}



CRYSTAL RED TINTCOAT^{1,2,4}



RED HOT²



MOCHA BRONZE METALLIC^{3,4}



ASHEN GRAY METALLIC⁴



SILVER ICE METALLIC



WHITE DIAMOND TRICOAT^{1,4,5}



SUMMIT WHITE

WHEELS



15" Steel Bolt-On
Wheel Covers (Standard on LS)



15" Painted-Aluminum
(Standard on LT)



16" Painted-Aluminum
(Available on LT⁶)



17" Painted-Aluminum
(Standard on LTZ)



17" Midnight Silver-Painted Aluminum
(Standard on RS)



18" Midnight Silver-Painted Aluminum
(Requires Dusk Package)

DEALER-INSTALLED ACCESSORIES

PERSONALIZE YOUR SONIC AT CHEVROLET.COM/ACCESSORIES



16" White-Painted 10-Spoke Wheel
(Also available in Black)



17" Black-Painted 5-Spoke Wheel
(Also available in White)



Door Sill Plate

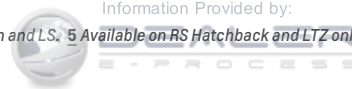


Z-Spec Orange-Flash Grille Surround
(Also available in Black, Silver and White)



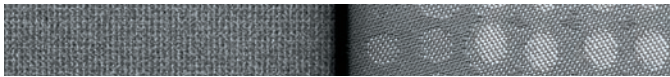
Z-Spec Orange-Flash Mirror Cap
(Also available in Black, Silver and White)

Information Provided by:



¹ Extra-cost color. ² Not available with Jet Black/Brick interior. ³ Not available on RS. ⁴ Not available on RS Sedan and LT⁵. ⁵ Available on RS Hatchback and LTZ only. ⁶ Requires available Fun and Sun Package, Dragon Green Promotional Package or Wheels and Foglamp Package.

FABRICS



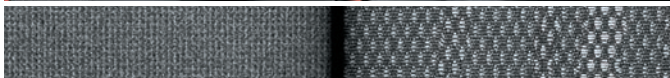
Jet Black/Dark Titanium-COLOR Sport Cloth¹



Jet Black/Dark Titanium-COLOR Deluxe Cloth²



Jet Black/Brick Deluxe Cloth²



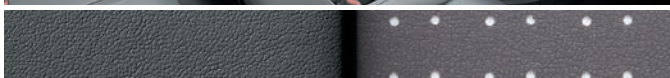
Dark Pewter-COLOR/Dark Titanium-COLOR Deluxe Cloth²



Jet Black/Dark Titanium-COLOR Perforated Leatherette Seating Surfaces³



Jet Black/Brick Perforated Leatherette Seating Surfaces³



Dark Pewter-COLOR/Dark Titanium-COLOR Perforated Leatherette Seating Surfaces³



Jet Black Leather-Appointed Seats with Sueded Microfiber Inserts⁴



Jet Black/Mojave Leather-Appointed Seats with Sueded Microfiber Inserts⁵

¹ Standard on LS. ² Standard on LT. ³ Standard on LTZ. ⁴ Standard on RS. ⁵ Requires available Dusk Package.



SELECT VEHICLE FEATURES

SONIC LS

ECOTEC 1.8L 4-cylinder engine

5-speed manual transmission

4-wheel antilock front disc/rear drum brakes

15" steel wheels with bolt-on wheel covers

10 air bags¹

OnStar Directions & Connections® Plan² standard for the first six months

StabiliTrak Electronic Stability Control System with Traction Control and Panic Brake Assist

Theft-deterrent system with content-theft alarm and engine immobilizer

Hill Start Assist

Tire Pressure Monitor³

Outside manual-adjustable manual-folding body-color mirrors

Roof-mounted spoiler (Hatchback)

AM/FM stereo with equalizer, auxiliary audio input jack and four speakers

OnStar with 4G LTE and mobile Wi-Fi hotspot for up to 7 devices⁴ standard for 3 months or 3 GB (whichever comes first)

Bluetooth® wireless technology⁵ for select phones

Steering wheel-mounted controls for audio and phone

Driver Information Center with readouts for trip odometer, fuel range, average fuel economy, average vehicle speed, Tire Pressure Monitor³ and Oil-Life Monitor

Single-zone manual climate control

Upper and lower glove boxes

Tilt and telescopic steering column

Power door locks

Remote Keyless Entry

Front bucket seats with height-adjustable head restraints

6-way manual-adjustable driver seat with armrest

4-way manual-adjustable front passenger seat

60/40 split-folding rear seat with outboard height-adjustable head restraints

SONIC LT In addition to or replacing LS features, LT includes:

Outside heated power-adjustable manual-folding body-color mirrors

15" painted-aluminum wheels

AM/FM stereo with CD player and MP3 playback, seek-scan, digital clock, auxiliary audio input jack and Radio Data System (RDS)⁶

Bluetooth audio streaming⁵ for select phones

USB port⁷

SiriusXM Satellite Radio⁸ All-Access Package with 3-month trial subscription

Premium 6-speaker sound system

Power windows with driver express-up/-down feature

Cruise control with steering wheel-mounted controls

Remote vehicle starter system⁹

SONIC LTZ In addition to or replacing LT features, LTZ includes:

ECOTEC 1.4L turbocharged 4-cylinder engine

Rear vision camera

Rear spoiler (Sedan)

Foglamps

17" painted-aluminum wheels

Chevrolet MyLink¹⁰ Radio with 7-inch diagonal color touch-screen, AM/FM stereo with seek-scan and digital clock; includes USB port⁷, Bluetooth audio streaming⁵ for select phones, Siri Eyes Free¹¹ voice recognition technology, and smartphone app integration with BringGo¹², TuneIn¹³, Pandora[®] Internet Radio¹³ and Stitcher SmartRadio™¹³

Perforated leatherette seating surfaces

Heated front seats

3-spoke leather-wrapped steering wheel

SONIC RS In addition to or replacing LTZ features, RS includes:

6-speed manual transmission with performance-oriented gear ratios

Lowered and stiffened suspension with performance-tuned dampers

4-wheel antilock disc brakes

Sport exhaust with chrome outlet

RS-specific front fascia with unique foglamp design, sporty rocker moldings and Black Granite Metallic-color mirror caps

17" Midnight Silver-painted aluminum wheels

Leather-appointed seats with sueded microfiber inserts

3-spoke sport steering wheel with racing-inspired flat-bottom design

RS-specific shift knob

Aluminum sport pedals

¹ Always use safety belts and the correct restraint for your child's age and size. Even in vehicles equipped with the Passenger Sensing System, children are safer when properly secured in a rear seat in the appropriate infant, child or booster seat. Never place a rear-facing infant restraint in the front seat of any vehicle equipped with a passenger air bag. See the Owner's Manual and the child safety seat instructions for more safety information. ² Visit onstar.com for coverage map, details and system limitations. Services vary by model and conditions. ³ Excludes spare tire when equipped. ⁴ Devices must be WPA2-compliant with active OnStar service and data plan. Wi-Fi devices manufactured prior to 2006 may not be compatible. Please consult your device manufacturer for information regarding the WPA2 security protocol and Wi-Fi device compatibility. Visit onstar.com for details and system limitations. ⁵ Go to gmtotalconnect.com to find out which phones are compatible with the vehicle. ⁶ RDS functions only where stations broadcast RDS information. ⁷ Not compatible with all devices. ⁸ If you subscribe after your trial period, subscriptions are continuous until you call SiriusXM to cancel. See SiriusXM Customer Agreement for complete terms at siriusxm.com. Other fees and taxes will apply. All fees and programming subject to change. XM satellite service is available only in the 48 contiguous United States and D.C. ⁹ Requires available 6-speed automatic transmission. ¹⁰ Full functionality requires compatible Bluetooth and smartphone, and USB connectivity for some devices. MyLink on Sonic does not include functionality such as enhanced voice recognition, Gracenote and CD player. ¹¹ Requires available Chevrolet MyLink and compatible iPhone running iOS 6 or later. ¹² Requires available Chevrolet MyLink. BringGo app must be purchased separately. Requires compatible smartphone. Data plan rates apply. See dealer or call 1-855-4-SUPPORT (1-855-4-787-7678) for more information. ¹³ Data plan rates apply.



SPECIFICATIONS

	LS	LT	LTZ	RS
EXTERIOR				
Door handles: Body-color	●	●	–	●
Body-color with chrome strip	–	–	●	–
Foglamps	–	○ ¹	●	●
Mirrors: Manual-adjustable, body-color, manual-folding	●	–	–	–
Heated, power-adjustable, body-color, manual-folding	–	●	●	–
Heated, power-adjustable, Black Granite Metallic-color, manual-folding	–	–	–	●
Moldings: Black beltline	●	–	–	–
Chrome beltline	–	●	●	●
Rear vision camera	–	○ ²	●	●
Spoiler: Rear, integrated decklid (Sedan)	–	○ ¹	●	●
Rear, roof-mounted (Hatchback)	●	●	●	●
ENGINE/CHASSIS				
Engine: ECOTEC 1.8L 4-cylinder with Variable Valve Timing, 138 horsepower and 125 lb.-ft. of torque	●	●	–	–
ECOTEC 1.4L turbocharged 4-cylinder with Variable Valve Timing, 138 horsepower and 148 lb.-ft. of torque	–	○ ³	●	●
Suspension: Touring	●	●	●	–
Sport	–	–	–	●
Transmission: 5-speed manual	●	●	–	–
6-speed automatic with thumb-controlled gear selection on the shifter	○	○	○	–
6-speed manual	–	○ ⁴	●	–
6-speed manual, RS-specific gearset	–	–	–	●
6-speed automatic with thumb-controlled gear selection on the shifter, RS-specific final drive ratio	–	–	–	○
SAFETY & SECURITY				
10 air bags: ⁵ Driver and front passenger frontal, includes Passenger Sensing System; front and rear seat-mounted side-impact; roof rail-mounted head-curtain for front and rear outboard seating positions; driver and front passenger knee	●	●	●	●
Brakes: 4-wheel antilock (front disc/rear drum)	●	●	●	–
4-wheel antilock disc	–	–	○ ⁶	●
Forward Collision Alert and Lane Departure Warning	–	○ ⁷	○	○

● STANDARD ○ AVAILABLE – NOT AVAILABLE

	LS	LT	LTZ	RS
INTERIOR				
Cruise control	–	●	●	●
Remote vehicle starter system ⁸	–	●	●	●
Steering wheel: 3-spoke	●	●	–	–
3-spoke leather-wrapped	–	–	●	–
Sport, 3-spoke leather-wrapped with contrasting stitching and racing-inspired flat-bottom design	–	–	–	●
Sunroof: Power, tilt/sliding with express-open and wind deflector	–	○ ⁹	○	○
Windows: Manual	●	–	–	–
Power, driver express-up/down with anti-pinch feature	–	●	●	●
Floor mats: Carpeted, front	●	–	–	–
Front and rear	–	●	●	–
Front and rear, RS-specific	–	–	–	●
SEATING				
Heated seats: Driver and front passenger	–	–	●	●
Seat trim: Sport Cloth	●	–	–	–
Deluxe Cloth	–	●	–	–
Perforated leatherette	–	–	●	–
Leather-appointed with sueded microfiber inserts	–	–	○ ⁵	●
AUDIO SYSTEMS				
AM/FM stereo with equalizer, auxiliary audio input jack and four speakers	●	–	–	–
AM/FM stereo with CD player and MP3 playback, seek-scan, digital clock, auxiliary audio input jack, Radio Data System (RDS) ¹⁰ , USB port ¹¹ and Bluetooth [®] audio streaming ¹² for select phones	–	●	–	–
Chevrolet MyLink [®] Radio: 7-inch diagonal color touch-screen, AM/FM stereo with seek-scan and digital clock; includes USB port, ¹¹ Bluetooth audio streaming ¹² for select phones, Siri Eyes Free, ¹⁴ voice recognition technology, and smartphone app integration with BringGo, ¹⁵ TuneIn, ¹⁶ Pandora [®] Internet Radio ¹⁶ and Stitcher SmartRadio ^{™16}	–	○	●	●
Bluetooth wireless technology ¹² for select phones	●	●	●	●
Premium 6-speaker sound system	–	●	●	●
OnStar with 4G LTE and mobile Wi-Fi hotspot for up to 7 devices ¹⁷ standard for 3 months or 3 GB (whichever comes first)	●	●	●	●
SiriusXM Satellite Radio [®] All-Access Package with 3-month trial subscription	–	●	●	●

	LS	LT	LTZ	RS
WHEELS				
15" steel with bolt-on wheel covers	●	–	–	–
15" painted-aluminum	–	●	–	–
16" painted-aluminum	–	○ ¹⁹	–	–
17" painted-aluminum	–	–	●	–
17" Midnight Silver-painted aluminum	–	–	–	●
18" Midnight Silver-painted aluminum	–	–	○ ⁵	–
Compact spare tire	●	● ²⁰	●	●
Tire sealant and inflator kit	–	○ ²¹	–	–
PACKAGES				
Advanced Safety Package: Forward Collision Alert and Lane Departure Warning	–	○ ⁷	○	○
Fun and Sun Package: ECOTEC 1.4L turbocharged 4-cylinder engine, power sunroof and 16" painted-aluminum wheels	–	○ ²²	–	–
Dragon Green Promotional Package: Dragon Green Metallic paint, 16" painted-aluminum wheels, foglamps and power sunroof (includes rear spoiler on Sedan)	–	○ ²³	–	–
Wheels and Foglamp Package: 16" painted-aluminum wheels and foglamps (includes rear spoiler on Sedan)	–	○ ²⁴	–	–
Dusk Package: 18" Midnight Silver-painted aluminum wheels; 4-wheel antilock disc brakes; ground effects; custom exhaust tip; matte-finish grille bezels, door handles and decklid trim; Mojave-accented interior trim; available exclusively in Ashen Gray Metallic with Mojave leather-appointed interior	–	–	○	–

¹ Requires available Dragon Green Promotional Package or Wheels and Foglamp Package. ² Requires available Chevrolet MyLink. ³ Requires available 6-speed manual or automatic transmission. ⁴ Requires available ECOTEC 1.4L turbocharged 4-cylinder engine. ⁵ Always use safety belts and the correct restraint for your child's age and size. Even in vehicles equipped with the Passenger Sensing System, children are safer when properly secured in a rear seat in the appropriate infant, child or booster seat. Never place a rear-facing infant restraint in the front seat of any vehicle equipped with a passenger air bag. See the Owner's Manual and the child safety seat instructions for more safety information. ⁶ Requires available Dusk Package. ⁷ Requires available Chevrolet MyLink and available rear vision camera. ⁸ Requires available 6-speed automatic transmission. ⁹ Requires available Fun and Sun Package or Dragon Green Promotional Package. ¹⁰ RDS functions only where stations broadcast RDS information. ¹¹ Not compatible with all devices. ¹² Go to gmtotalconnect.com to find out which phones are compatible with the vehicle. ¹³ Full functionality requires compatible Bluetooth and smartphone, and USB connectivity for some devices. MyLink on Sonic does not include functionality such as enhanced voice recognition, Gracenote and CD player. ¹⁴ Requires available Chevrolet MyLink and compatible iPhone running iOS 6 or later. ¹⁵ Requires available Chevrolet MyLink. BringGo app must be purchased separately. Requires compatible smartphone. Data plan rates apply. See dealer or call 1-855-4-SUPPORT (1-855-4-787-7678) for more information. ¹⁶ Data plan rates apply. ¹⁷ Devices must be WPA2-compliant with active OnStar service and data plan. Wi-Fi devices manufactured prior to 2006 may not be compatible. Please consult your device manufacturer for information regarding the WPA2 security protocol and Wi-Fi device compatibility. Visit onstar.com for details and system limitations. ¹⁸ If you subscribe after your trial period, subscriptions are continuous until you call SiriusXM to cancel. See SiriusXM Customer Agreement for complete terms at siriusxm.com. Other fees and taxes will apply. All fees and programming subject to change. XM satellite service is available only in the 48 contiguous United States and D.C. ¹⁹ Requires available Fun and Sun Package, Dragon Green Promotional Package or Wheels and Foglamp Package. ²⁰ Not available with ECOTEC 1.4L turbocharged 4-cylinder engine and 6-speed manual transmission on Sonic LT Sedan models. ²¹ Requires available ECOTEC 1.4L turbocharged 4-cylinder engine and 6-speed manual transmission on Sonic LT Sedan models. ²² Available on Hatchback models only. Not available with Dragon Green Promotional Package or Wheels and Foglamp Package. ²³ Not available with Wheels and Foglamp Package or Fun and Sun Package. ²⁴ Requires ECOTEC 1.8L 4-cylinder engine on Sonic LT Sedan models. Not available with Dragon Green Promotional Package or Fun and Sun Package.



DIMENSIONS

HATCHBACK



59.4"
68.3"



99.4"
159.0"



59.4"

59.7" (LS/LT/LTZ)
59.3" (RS)

SEDAN



59.4"
68.3"



99.4"
173.1"



59.4"

59.7" (LS/LT/LTZ)
59.3" (RS)

MAXIMUM CAPACITIES

EPA-ESTIMATED FUEL ECONOMY

ECOTEC 1.8L 4-cylinder engine (LS/LT/LTZ) with 5-speed manual transmission	26 MPG city/35 highway/30 combined
ECOTEC 1.8L 4-cylinder engine (LS/LT/LTZ) with 6-speed automatic transmission	25 MPG city/35 highway/28 combined
ECOTEC 1.4L turbocharged 4-cylinder engine (LT/LTZ) with 6-speed manual transmission	29 MPG city/40 highway/33 combined
ECOTEC 1.4L turbocharged 4-cylinder engine (LT/LTZ) with 6-speed automatic transmission	27 MPG city/37 highway/31 combined
ECOTEC 1.4L turbocharged 4-cylinder engine (RS) with 6-speed manual transmission	27 MPG city/34 highway/30 combined
ECOTEC 1.4L turbocharged 4-cylinder engine (RS) with 6-speed automatic transmission	25 MPG city/33 highway/28 combined

FUEL TANK (APPROXIMATE)

12.2 gallons

PASSENGER VOLUME

Sedan: 90.4 cubic feet/seats 5
Hatchback: 90.6 cubic feet/seats 5

CARGO VOLUME¹ (MAXIMUM)

Sedan: 14.9 cubic feet
Hatchback: 47.7 cubic feet

OWNERSHIP EXTRAS



CHEVROLET.COM/WARRANTY



CHEVROLET.COM/ACCESSORIES



ONSTAR.COM



SIRIUSXM.COM

WARRANTY

100,000-MILE/5-YEAR TRANSFERABLE POWERTRAIN LIMITED WARRANTY Every 2015 Chevrolet passenger car, light-duty truck, SUV and crossover comes with a 100,000-mile/5-year (whichever comes first) transferable Powertrain Limited Warranty. Plus, you get 100,000 miles/5 years (whichever comes first) of the 24/7 Roadside Assistance Program, the Courtesy Transportation Program, and much more. See dealer for details.

NEW VEHICLE LIMITED WARRANTY GM vehicles registered in the USA are covered for 36,000 miles/3 years (whichever comes first). The complete vehicle is covered, including tires, towing to your nearest Chevrolet dealership and cosmetic corrosion resulting from defects. Repairs will be made to correct any vehicle defect, and most warranty repairs will be made at no charge. In addition, rust-through corrosion will be covered for 100,000 miles/6 years (whichever comes first). See dealer for details.

¹ Cargo and load capacity limited by weight and distribution.



Information Provided by:
DEALER
E-PROCESS

IMPORTANT INFORMATION

CHEVROLET OWNER CENTER (MY.CHEVROLET.COM) Everything you need to know. Anything you need to do. Your Chevrolet Owner Center makes it easy. Create your account today to get the most out of your new vehicle. Get special alerts and offers, schedule service, review your maintenance schedule, and view how-to videos specifically for your vehicle. All online, anytime. Visit the Owner Center today to register or take a tour.

CHEVROLET COMPLETE CARE Every new 2015 Chevrolet Sonic comes with 2 years/24,000 miles of scheduled maintenance that includes oil and filter changes, tire rotations and multipoint vehicle inspections. Covers only scheduled oil changes with filter and tire rotations according to your new vehicle's recommended maintenance schedule for up to 2 years or 24,000 miles, whichever comes first. Does not include air filters. Maximum of four service events. See participating dealer for other restrictions and complete details.

ENGINES Chevrolet products are equipped with engines produced by GM Powertrain or other suppliers to GM worldwide. The engines in Chevrolet products may also be used in other GM makes and models.

ASSEMBLY Chevrolet vehicles and their components are assembled or produced by different operating units of General Motors, its subsidiaries or suppliers to GM worldwide. We sometimes find it necessary to produce Chevrolet vehicles with different or differently sourced components than originally scheduled. Since some options may be unavailable when your vehicle is assembled, we suggest you verify that your vehicle includes the equipment you ordered and that, if there were changes, they are acceptable to you.

ONSTAR OnStar services require vehicle electrical system (including battery), wireless service and GPS satellite signals to be available and operating for features to function properly. OnStar acts as a link to existing emergency service providers. Subscription Service Agreement required. Call 1-888-4ONSTAR (1-888-466-7827) or visit onstar.com for OnStar Terms and Conditions, Privacy Policy, details and system limitations.

A NOTE ON CHILD SAFETY Always use safety belts and the correct restraint for your child's age and size. Even in vehicles equipped with the Passenger Sensing System, children are safer when properly secured in a rear seat in the appropriate infant, child or booster seat. Never place a rear-facing infant restraint in the front seat of any vehicle equipped with a passenger air bag. See the Owner's Manual and child safety seat instructions for more safety information.

IMPORTANT WORDS ABOUT THIS CATALOG We have tried to make this catalog comprehensive and factual. We reserve the right, however, to make changes at any time, without notice, in prices, colors, materials, equipment, specifications, models and availability. Specifications, dimensions, measurements, ratings and other numbers in this catalog and other printed materials provided at the dealership or affixed to vehicles are approximations based on design and engineering drawings, prototypes and laboratory tests. Your vehicle may differ due to variations in manufacture and equipment. Since some information may have been updated since the time of printing, please check with your Chevrolet dealer for complete details. Chevrolet reserves the right to lengthen or shorten the model year for any product for any reason or to start and end model years at different times. Certain vehicle features may lose their usefulness over time due to obsolescence from technological changes. Unless otherwise noted, all claims based on GM Small Car segment and latest available competitive information. Excludes other GM vehicles.

FLEET ORDERS Some standard content may be deleted on fleet orders. See dealer for details.

CHEVROLET OWNERSHIP EXPERIENCE Chevrolet is committed to enhancing the vehicle shopping and ownership experience through a wide array of programs. Visit chevrolet.com to build and price, find a vehicle, request a quote, compare vehicles, find financial tools or track your vehicle order. You'll also find information about 24-hour Roadside Assistance, Courtesy Transportation, Customer Assistance, GM Mobility, safety and current incentives.

CHEVROLET.COM/SAFETY Chevrolet is committed to keeping you and your family safe – from the start of your journey to your destination. That's why every Chevrolet is designed with a comprehensive list of safety and security features to help give you peace of mind.

GMMOBILITY.COM (1-800-323-9935) GM Mobility™ offers financial assistance for eligible adaptive equipment to make automotive travel easier for persons with disabilities or special transportation needs. To learn more about special GM Mobility offers, visit gmmobility.com.

THE BUYPOWER CARD The Chevrolet BuyPower Card – Every purchase you make with the BuyPower Card from Capital One* helps you earn toward an eligible new Chevrolet, Buick, GMC or Cadillac vehicle. There's no limit on the amount you can earn or redeem, and your Earnings don't expire. Visit chevroletbuypowercard.com/catalogs.

* Capital One, N.A. is the issuer of the BuyPower Card. General Motors ("GM") is responsible for the operation and administration of the Earnings program.



TWITTER.COM/CHEVROLET



YOUTUBE.COM/CHEVROLET



FACEBOOK.COM/CHEVROLET

GM, the GM logo, Chevrolet, the Chevrolet logo, and the slogans, emblems, vehicle model names, vehicle body designs and other marks appearing in this catalog are the trademarks and/or service marks of General Motors, its subsidiaries, affiliates or licensors. ©2014 OnStar. All rights reserved. SiriusXM and all related marks and logos are trademarks of Sirius XM Radio Inc. The Bluetooth word mark is a registered trademark owned by Bluetooth SIG, Inc., and any use of such mark by Chevrolet is under license.

©2014 General Motors. All rights reserved. August 2014



Information Provided by:
DEALER
E-PROCESS



FIND NEW ROADS™

CHEVROLET.COM



Information Provided by:
DEALER
E-PROCESS