

SPARK 2015

CHEVROLET



Information Provided by:



Spark 2LT in Lime.



**HAVE A CAR IN THE CITY –
AND LOVE IT.**

If you're looking for downtown style and uptown smarts, Spark is the perfect fit. Turn heads as you take on narrow streets. Slide easily into spots where most would fear to parallel. Stay connected like never before with the latest tech-savvy features. And with a surprising amount of room inside, you'll never have to leave your friends behind. Big city – you've met your match.

FIND NEW ROADS™

Information Provided by:



EXTERIOR DESIGN

“SIMPLY PUT, THE SPARK IS FANTASTIC WHEN COMPARED TO ITS MAIN COMPETITORS FROM SMART, SCION AND FIAT.”

— AUTOGUIDE.COM

Spark 2LT in Salsa. Spark 1LT in Grape Ice and Spark 2LT in Black Granite (extra-cost color).

PAINT THE TOWN. The city is your canvas and Spark is your color wheel. Choose from eight shades that pop off the pavement and roll off the tongue, including Lemonade, Lime, Salsa, Denim and Grape Ice.

SPARK PACKS A PUNCH. Free-flowing lines and an athletic stance invite you to step out of the crowd and into a Spark. With five doors you'll find room to fit four. And that rear hatch makes loading bikes, groceries and those big-ticket items a cinch.

URBAN ROLL CALL. Spin around town on standard 15-inch split 5-spoke Silver-painted aluminum wheels or 15-inch machined-face aluminum wheels with dark gray-painted pockets (standard on 2LT). It's your call.



Information Provided by:
DEALER
E-PROCESS



INTERIOR DESIGN

EXPRESS YOUR INNER SELF.

STREET ARTIST. Skip the turnstile and ride in style. Choose color-coordinated interior trim in Silver, Red or Green. You'll also enjoy heated front leatherette seats on Spark 2LT models.

PURE MOOD. Set the tone with available blue ambient lighting and dial up your favorite soundtrack to the beat of the city.

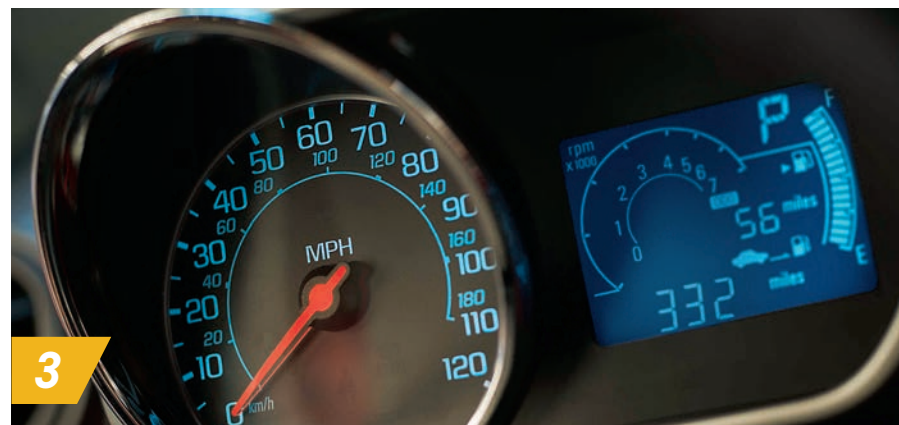
SPACE IS THE PLACE. Make room for whatever you have in mind with the 60/40-split flip-and-fold rear seat. The surprisingly large 86.3 cubic feet of maximum passenger space offers plenty of room for you and three co-pilots to

enjoy a wrinkle-free night out. Or you can fold down the rear seat for 31.2 cubic feet of cargo area! Either way, you get more space than you'll find in FIAT 500, smart for two and Scion iQ.

¹ Cargo and load capacity limited by weight and distribution.

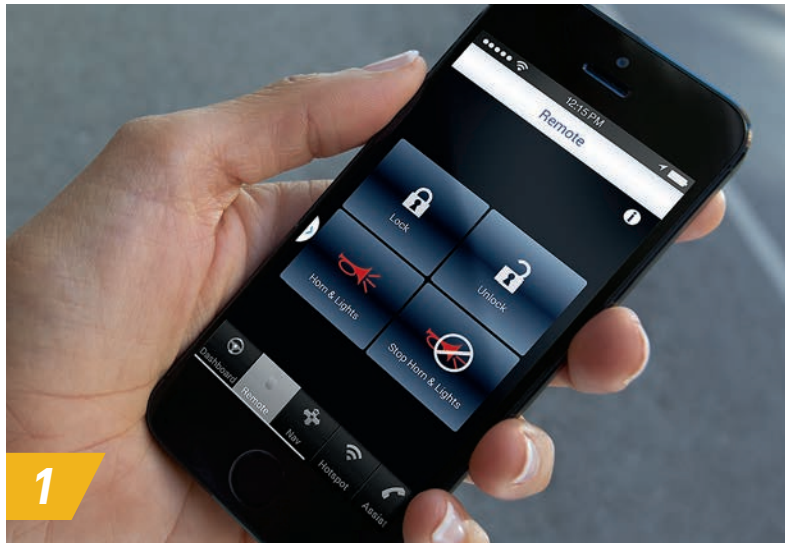


Information Provided by:
DEALER
E-PROCESS



LIFE JUST GOT EASIER.

-
- 1. The easy access rear hatch makes finders keepers.*
-
- 2. Convenience is always within reach.*
-
- 3. The Spark instrument cluster brings motorcycle style – no helmet required.*
-



EVERY HOUR IS "APPY" HOUR.

1. Activate your horn and lights, plus lock and unlock your vehicle (requires available power door locks) with OnStar RemoteLink.¹
2. Keep your eyes on the road with Siri Eyes Free² onboard.
3. Find your way with the affordable BringGo³ nav app – in-dash and on foot.

¹ Available on select Apple, Android, BlackBerry and Windows devices. Services vary by device, vehicle and conditions. Requires active OnStar subscription, which is standard for six months. ² Requires available Chevrolet MyLink and compatible iPhone running iOS 6 or later. ³ Requires available Chevrolet MyLink. BringGo app must be purchased separately. Requires compatible smartphone. Data plan rates apply. Call 1-855-4-SUPPORT (1-855-4-787-7678) or see dealer for more information.



LIFE AT YOUR FINGERTIPS.

1 Full functionality requires compatible Bluetooth and smartphone, and USB connectivity for some devices. MyLink on Spark does not include functionality such as enhanced voice recognition, Gracenote and CD player. **2** If you subscribe after your trial period, subscriptions are continuous until you call SiriusXM to cancel. See SiriusXM Customer Agreement for complete terms at siriusxm.com. Other fees and taxes will apply. All fees and programming subject to change. XM satellite service is available only in the 48 contiguous United States and D.C. **3** Not compatible with all devices. **4** Go to gmtotalconnect.com to find out which phones are compatible with the vehicle. **5** Requires available Chevrolet MyLink and compatible iPhone running iOS 6 or later. **6** Requires available Chevrolet MyLink. BringGo app must be purchased separately. Requires compatible smartphone. Data plan rates apply. Call 1-855-4-SUPPORT (1-855-4-787-7678) or see dealer for more information.

iPhone is a trademark of Apple Inc., registered in the U.S. and other countries.

FIND YOUR BEAT. Available Chevrolet MyLink¹ keeps your contacts, music and media at your fingertips with a 7-inch diagonal color touch-screen. Listen to commercial-free music, talk, sports, news and more with a 3-month trial of SiriusXM Satellite Radio.² Stream your tunes with the USB port³ or Bluetooth[®] wireless technology.⁴

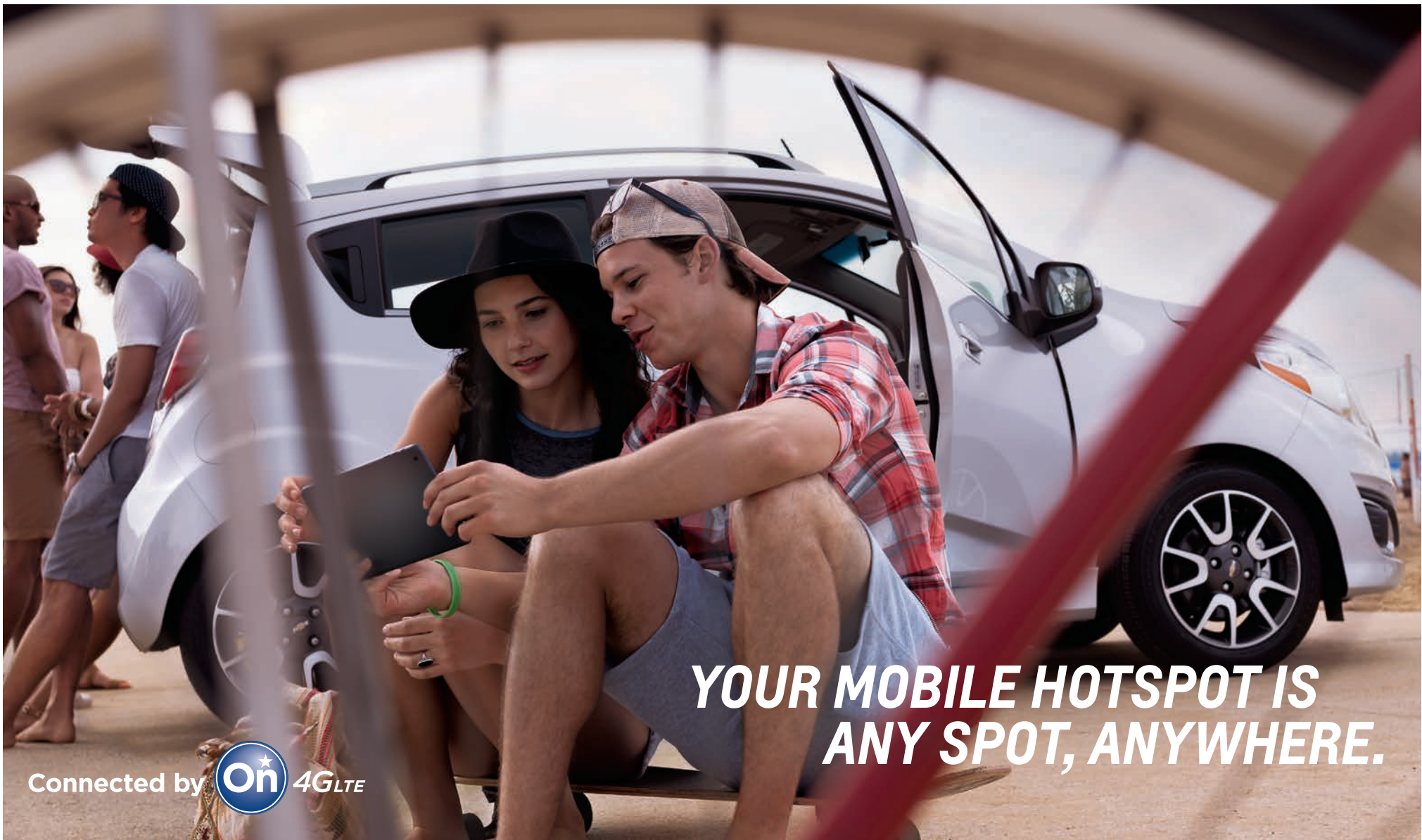
CALL THE SHOTS. With Siri Eyes Free,⁵ simply pair your compatible iPhone[®] to available Chevrolet MyLink.¹ Siri Eyes Free allows limited hands-free interaction for those times when you need to read or compose text messages, make phone calls or play your favorite music.

NO BACKSEAT DRIVER. If you've gotten yourself all turned around in the urban jungle, set a course with the BringGo[®] navigation app. BringGo gets you from point A to point B. Park your Spark and hoof it the rest of the way with BringGo on your phone.



Information Provided by:

DEALER
E-PROCESS



YOUR MOBILE HOTSPOT IS ANY SPOT, ANYWHERE.

Connected by  4G LTE

INTERNET IN YOUR SPARK. Chevrolet is the first and only car company to bring built-in 4G LTE Wi-Fi to cars, trucks and crossovers, offering drivers the ability to seamlessly connect their smart devices and vehicles to the Internet!

THE ULTIMATE MOBILE WI-FI HOTSPOT. Whenever your Spark is on, available OnStar 4G LTE Wi-Fi is on too. It offers great signal quality and bandwidth for up to seven devices!

FAST, EASY, RELIABLE. Available built-in OnStar with 4G LTE provides a better in-vehicle experience than your smartphone. Our stronger signal means you have a reliable connection. It's automatically on after initial setup and ready to connect to your mobile devices!

¹ Devices must be WPA2-compliant with active OnStar service and data plan. Wi-Fi devices manufactured prior to 2006 may not be compatible. Please consult your device manufacturer for information regarding the WPA2 security protocol and Wi-Fi device compatibility. Visit onstar.com for details and system limitations.



PERFORMANCE

**THE NEW
ZIP CODE.**

Spark 2LT in Lime.



**EVOLUTION
E-PROCESS**



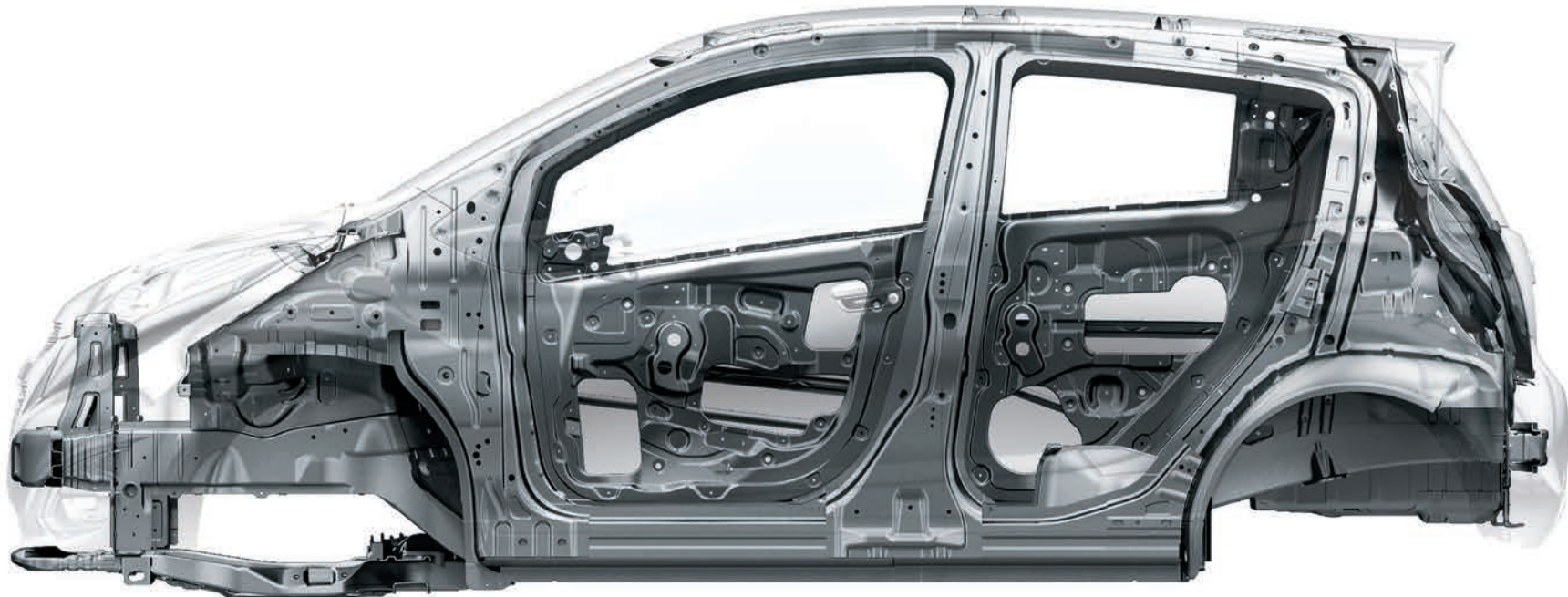
Spark 2LT in Lime.

GET UP AND GO. The city is your playground whether you choose the punchy 5-speed manual or opt for the smooth Continuously Variable Transmission (CVT). Either way, the ECOTEC® 1.2L dual overhead cam I-4 engine with Variable Valve Timing gives you power to

make your moves. And with an EPA-estimated 39 MPG highway, you'll never have reason to call it a day. But when you do, even parking is a joy – Spark boasts a tighter turning radius than MINI Cooper.

STAY THE COURSE. City life has its share of ups and downs. Hill Start Assist helps you manage by keeping the brakes engaged for the split second it takes to lift your foot off the brake pedal and hit the gas. The stiff body frame integral structure delivers an athletic drive through any twist and turn of the road.

SAFETY TECHNOLOGY IS ALL AROUND YOU.



¹ Visit onstar.com for coverage map, details and system limitations. Services vary by model and conditions. OnStar acts as a link to existing emergency service providers. Not all vehicles may transmit all crash data. ² Air bag inflation can cause severe injury or death to anyone too close to the air bag when it deploys. Be sure every occupant is properly restrained. Always use safety belts and the correct restraint for your child's age and size. Even in vehicles equipped with the Passenger Sensing System, children are safer when properly secured in a rear seat in the appropriate infant, child or booster seat. Never place a rear-facing infant restraint in the front seat of any vehicle equipped with a passenger air bag. See the Owner's Manual and the child safety seat instructions for more safety information.

SAFETY: CHECK. Spark is the first and only car in its segment to have been named a 2014 Top Safety Pick by the Insurance Institute for Highway Safety (IIHS). An ingenious combination of safety technology such as the rollover sensing system and a safety cage made from high-strength steel helps to keep you safe from every angle.

HOLD STEADY. The StabiliTrak® Electronic Stability Control System and 4-wheel antilock brakes help you stay the course by preventing vehicle slide and wheel spin.

GO WITH CONFIDENCE. Breathe easy with the support of OnStar Automatic Crash Response¹, standard for six months. In case of a crash, built-in sensors can automatically alert a specially trained OnStar Advisor who is connected into your Spark, even if you can't respond.

10 STANDARD AIR BAGS. Spark offers protection where it counts. Ten standard air bags² surround you in safety, including dual-stage frontal, seat-mounted and knee-bolstered driver and front passenger air bags to cushion the blow.



Information Provided by:
DEALER
E-PROCESS

PEACE OF MIND



**COMPLETE
CARE**

WE'RE WITH YOU ALL THE WAY. Chevrolet Complete Care reflects our commitment to you and your new Spark. We've got you covered with 2 years of included Scheduled Maintenance and 5 years of Roadside Assistance and Courtesy Transportation.

ONSTAR BASIC PLAN. Stay connected to everyone and everything that matters with the OnStar Basic Plan¹ included with your Spark. You'll get OnStar RemoteLink[®] Key Fob Services², which allows you to lock and unlock your doors (if equipped with available power door locks), and activate your horn and lights from anywhere – using your smartphone or other mobile device. Plus, when you opt in for OnStar Vehicle Diagnostics³, we'll run monthly checks of your vehicle's engine, transmission, antilock brakes and more. And if you sign up for Dealer Maintenance Notification, we can send your diagnostic report directly to your preferred dealer to make scheduling service simple. Available OnStar 4G LTE with Wi-Fi gives you access to a high-speed 4G LTE Internet connection⁴ and an available built-in mobile Wi-Fi hotspot⁴ that can connect up to seven devices. For Emergency Services, Stolen Vehicle Assistance and other Advisor-based services, see additional OnStar plans.

YOUR COMPREHENSIVE OWNER BENEFIT PROGRAM.

2 years/24,000 miles of included Scheduled Maintenance.⁵

5 years/100,000 miles of Roadside Assistance⁶ and Courtesy Transportation.⁶

5-year/100,000-mile Powertrain Limited Warranty.⁶

3-year/36,000-mile Bumper-to-Bumper Warranty.⁶

6 years/100,000 miles of Rust-Through Protection.⁶

5 years of OnStar Basic Plan¹ including RemoteLink Key Fob Services.²

6 months of OnStar Directions & Connections[®] Plan.⁷

1 Access is available for five years from the date of vehicle delivery and is transferable. Does not include any emergency services or other OnStar services. See onstar.com for details and system limitations. 2 Access is available for five years from the date of vehicle delivery and is transferable. Does not include any emergency services or other OnStar services. To cancel RemoteLink Key Fob Services or if your vehicle is sold, it is important to contact an OnStar Advisor. See onstar.com/mobile for full details. 3 Capabilities vary by model. Visit onstar.com for details and system limitations. 4 Devices must be WPA2-compliant with active OnStar service and data plan. Wi-Fi devices manufactured prior to 2006 may not be compatible. Please consult your device manufacturer for information regarding the WPA2 security protocol and Wi-Fi device compatibility. Visit onstar.com for details and system limitations. 5 Covers only scheduled oil changes with filter and tire rotations according to your new vehicle's recommended maintenance schedule for up to 2 years or 24,000 miles, whichever comes first. Does not include air filters. Maximum of four service events. See participating dealer for other restrictions and complete details. 6 Whichever comes first. See dealer for details. 7 Visit onstar.com for coverage map, details and system limitations. Services vary by model and conditions.

Spark 2LT in Denim



COLORS



BLACK GRANITE¹



DENIM



LIME



SALSA



GRAPE ICE



LEMONADE



SILVER ICE



SUMMIT WHITE

WHEELS



15" Split 5-Spoke
Silver-Painted Aluminum
(Standard on LS and 1LT)



15" Machined-Face Aluminum
with Dark Gray-Painted Pockets
(Standard on 2LT)

DEALER-INSTALLED ACCESSORIES

PERSONALIZE YOUR SPARK AT CHEVROLET.COM/ACCESSORIES



All-Weather Cargo Mat



All-Weather Floor Mats



Bodyside Moldings



Door Sill Plates



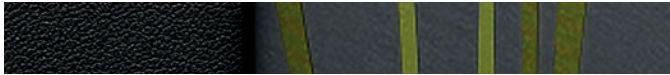
Blue Interior Trim Kit
(Also available in Silver, White and Green)

¹Extra-cost color.



Information Provided by:
DEALER
E-PROCESS

FABRICS



Dark Pewter-Color Cloth with Green Accents and Green Trim^{1,2}



Dark Pewter-Color Cloth with Yellow Inserts and Yellow Trim^{1,3}



Dark Pewter-Color Cloth with Silver-Color Accents and Blue Trim^{1,4}



Dark Pewter-Color Cloth with Silver-Color Accents and Silver-Color Trim^{1,5}



Dark Pewter-Color Leatherette with Light Titanium-Color Inserts and Silver-Color Trim^{6,7}



Dark Pewter-Color Leatherette and Silver-Color Trim^{6,8}



Dark Pewter-Color Leatherette and Green Trim^{2,6}



Dark Pewter-Color Leatherette with Red Inserts and Red Trim^{6,9}

¹ Standard on LS and 1LT. ² Requires Lime exterior color. ³ Requires Lemonade exterior color. ⁴ Requires Denim exterior color. ⁵ Requires Grape Ice, Silver Ice, Black Granite, Summit White or Salsa exterior colors. ⁶ Standard on 2LT. ⁷ Requires Grape Ice, Silver Ice or Summit White exterior colors. ⁸ Requires Black Granite, Denim or Lemonade exterior colors. ⁹ Requires Salsa exterior color.



SELECT VEHICLE FEATURES

SPARK LS

ECOTEC 1.2L DOHC 4-cylinder engine

5-speed manual transmission

Electric Power Steering

StabiliTrak Electronic Stability Control System with Brake Assist

4-wheel antilock brakes

10 air bags¹

OnStar Directions & Connections Plan² standard for the first six months

Hill Start Assist

Tire Pressure Monitoring System

Halogen headlamps with automatic exterior lamp control and daytime running lamps

Outside manual-adjustable body-color mirrors

Rear spoiler with integrated high-mounted LED stoplamp

15" split 5-spoke silver-painted aluminum wheels

AM/FM stereo with seek-scan and digital clock

4-speaker sound system

Auxiliary input jack

Air conditioning with cabin air filter

Driver Information Center

Outside temperature display

Cloth seats

Auxiliary power outlet located in center stack storage bin

OnStar with 4G LTE and mobile Wi-Fi hotspot for up to seven devices³ standard for 3 months or 3 GB (whichever comes first)

SPARK 1LT

In addition to or replacing LS features, 1LT includes:

Content-theft alarm

Outside power-adjustable body-color mirrors

Chevrolet MyLink⁴ Radio with 7-inch diagonal color touch-screen

6-speaker sound system

Bluetooth[®] wireless technology and audio streaming⁵ for select phones

SiriusXM Satellite Radio⁶ All Access Package with 3-month trial subscription

USB port⁷

Cruise control

Power-programmable door locks with Remote Keyless Entry

Steering wheel-mounted controls for phone, audio and cruise

Unique center stack trim

Carpeted front and rear floor mats

SPARK 2LT

In addition to or replacing 1LT features, 2LT includes:

Projector-style foglamps

Outside heated power-adjustable body-color mirrors with turn signal indicators

Chrome liftgate trim, beltline moldings and exhaust outlet

Silver-painted roof rails

Sport front and rear body-color fascias

Body-color lower rocker moldings

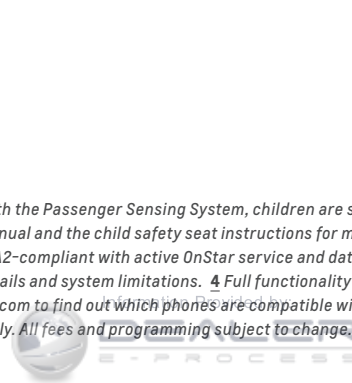
15" machined-face aluminum wheels with dark gray-painted pockets

Leather-wrapped steering wheel

Leatherette seats

Heated driver and front passenger seats

¹ Always use safety belts and the correct restraint for your child's age and size. Even in vehicles equipped with the Passenger Sensing System, children are safer when properly secured in a rear seat in the appropriate infant, child or booster seat. Never place a rear-facing infant restraint in the front seat of any vehicle equipped with a passenger air bag. See the Owner's Manual and the child safety seat instructions for more safety information. ² Visit onstar.com for coverage map, details and system limitations. OnStar acts as a link to existing emergency service providers. Not all vehicles may transmit all crash data. ³ Devices must be WPA2-compliant with active OnStar service and data plan. Wi-Fi devices manufactured prior to 2006 may not be compatible. Please consult your device manufacturer for information regarding the WPA2 security protocol and Wi-Fi device compatibility. Visit onstar.com for details and system limitations. ⁴ Full functionality requires compatible Bluetooth and smartphone, and USB connectivity for some devices. MyLink on Spark does not include functionality such as enhanced voice recognition, Gracenote and CD player. ⁵ Go to gmttotalconnect.com to find out which phones are compatible with the vehicle. ⁶ If you subscribe after your trial period, subscriptions are continuous until you call SiriusXM to cancel. See SiriusXM Customer Agreement for complete terms at siriusxm.com. Other fees and taxes will apply. All fees and programming subject to change. XM satellite service is available only in the 48 contiguous United States and D.C. ⁷ Not compatible with all devices.



SPECIFICATIONS

	LS	1LT	2LT
EXTERIOR			
Antenna: Roof-mounted	●	●	●
Door handles: Body-color	●	●	●
Exhaust outlet: Chrome	–	–	●
Fascias: Front and rear body-color, Sport	–	–	●
Foglamps: Projector-style	–	–	●
Grille: Chrome-surround	●	●	●
Headlamps: Halogen with automatic exterior lamp control and daytime running lamps	●	●	●
Liftgate trim: Chrome	–	–	●
Mirrors: Manual, body-color, manual-folding	●	–	–
Power-adjustable, body-color, manual-folding	–	●	–
Heated, power-adjustable, body-color, manual-folding with integrated turn signal indicators	–	–	●
Moldings: Chrome beltline	–	–	●
Rocker moldings: Body-color, lower	–	–	●
Roof rails: Silver-painted	–	–	●
Spoiler: Rear with integrated high-mounted LED stoplamp	●	●	●
ENGINE/CHASSIS			
Engine: ECOTEC 1.2L DOHC 4-cylinder MFI	●	●	●
Engine block heater	○	○	○
Steering: Power, electric	●	●	●
Suspension: Front, MacPherson struts	●	●	●
Rear, compound crank	●	●	●
Transmission: 5-speed manual	●	●	●
Continuously Variable Transmission (CVT)	○	○	○
SAFETY & SECURITY			
10 air bags: ¹ Driver and front passenger dual-stage frontal with Passenger Sensing System; front and rear seat-mounted side-impact; roof rail-mounted head-curtain for front and rear seating positions; driver and front passenger knee	●	●	●
Brakes: 4-wheel antilock, front disc/rear drum	●	●	●
OnStar Directions & Connections Plan ² with Automatic Crash Response standard for the first six months	●	●	●
Hill Start Assist	●	●	●
LATCH (Lower Anchors and Top tethers for CHildren) system for child safety seats	●	●	●
Theft-deterrent system: Engine immobilizer	●	●	●
Content-theft alarm	–	●	●

● STANDARD ○ AVAILABLE – NOT AVAILABLE

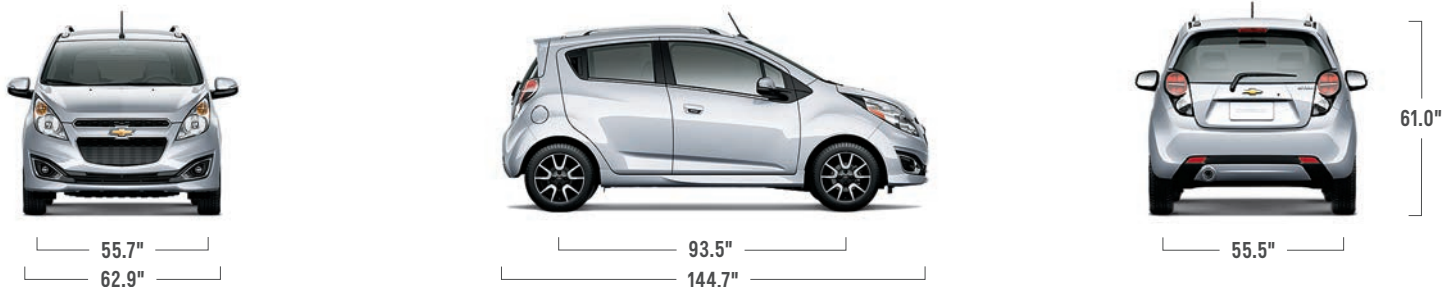
	LS	1LT	2LT
SAFETY & SECURITY (CONTINUED)			
Tire Pressure Monitoring System	●	●	●
Safety belts: 3-point, all positions, front height-adjustable	●	●	●
Safety belt pretensioners: Driver and front passenger	●	●	●
StabiliTrak Electronic Stability Control System with Brake Assist	●	●	●
Traction Control	●	●	●
INTERIOR			
Air conditioning: Single-zone manual with cabin air filter	●	●	●
Assist handles: All seating positions	●	●	●
Bluetooth wireless technology ³ for select phones	–	●	●
Cargo security shelf: Rear	●	●	●
Console: Rear, center with storage tray	●	●	●
Cruise control: Electronic with Set and Resume Speed, steering wheel-mounted controls	–	●	●
Cup holders: Two front and two rear	●	●	●
Defogger: Rear-window	●	●	●
Door locks: Power-programmable	–	●	●
Door storage pocket with bottle holder on driver and front passenger doors	●	●	●
Driver Information Center: Readouts for average and instantaneous fuel consumption, Tire Pressure Monitor and Oil-Life Monitor	●	●	●
Floor mats: Carpeted front and rear	–	●	●
Lighting: Rear cargo compartment lamp	●	●	●
Map pocket: Front passenger seatback	●	●	●
Mirror: Rearview, manual day/night	●	●	●
Outside temperature display	●	●	●
Power outlet: Auxiliary, located in front center stack storage bin	●	●	●
Remote Keyless Entry	–	●	●
Steering column: Tilt	●	●	●
Steering wheel: 3-spoke with silver-color accents	●	●	●
Leather-wrapped	–	–	●
Steering wheel-mounted controls: Phone, audio and cruise	–	●	●
Windows: Power, front and rear	●	●	●

	LS	1LT	2LT
SEATING			
Armrest: Driver, folding	●	●	●
Cloth	●	●	–
Leatherette	–	–	●
Front high-back buckets with adjustable head restraints	●	●	●
Heated front seats	–	–	●
Rear 60/40-split, flip-and-fold seat with adjustable head restraints	●	●	●
Seat adjusters: Driver 4-way manual and passenger 2-way manual with manual recline	●	●	●
AUDIO SYSTEMS			
AM/FM stereo with seek-scan and digital clock	●	–	–
4-speaker sound system	●	–	–
6-speaker sound system	–	●	●
Chevrolet MyLink ⁴ Radio: 7-inch diagonal color touch-screen, AM/FM stereo with seek-scan and digital clock; includes Bluetooth audio streaming ³ for select phones, smartphone app integration with BringGo, ⁵ TuneIn, ⁵ Pandora [®] Internet Radio ⁵ and Stitcher SmartRadio, ⁶ and Siri Eyes Free ⁷	–	●	●
Auxiliary input jack	●	●	●
OnStar with 4G LTE and mobile Wi-Fi hotspot for up to seven devices ⁸ standard for 3 months or 3 GB (whichever comes first)	●	●	●
SiriusXM Satellite Radio ⁹ All Access Package with 3-month trial subscription	–	●	●
USB port ¹⁰	–	●	●
WHEELS			
15" split 5-spoke silver-painted aluminum	●	●	–
15" machined-face aluminum with dark gray-painted pockets	–	–	●
Tires: P185/55R15 all-season blackwall	●	●	●
Tire inflation kit	●	●	●

¹ Always use safety belts and the correct restraint for your child's age and size. Even in vehicles equipped with the Passenger Sensing System, children are safer when properly secured in a rear seat in the appropriate infant, child or booster seat. Never place a rear-facing infant restraint in the front seat of any vehicle equipped with a passenger air bag. See the Owner's Manual and the child safety seat instructions for more safety information. ² Visit onstar.com for coverage map, details and system limitations. OnStar acts as a link to existing emergency service providers. Not all vehicles may transmit all crash data. ³ Go to gmttotalconnect.com to find out which phones are compatible with the vehicle. ⁴ Full functionality requires compatible Bluetooth and smartphone, and USB connectivity for some devices. MyLink on Spark does not include functionality such as enhanced voice recognition, Gracenote and CD player. ⁵ Requires Chevrolet MyLink. BringGo app must be purchased separately. Requires compatible smartphone. Data plan rates apply. See dealer or call 1-855-4-SUPPORT (1-855-4-787-7678) for more information. ⁶ Data plan rates apply. ⁷ Requires available Chevrolet MyLink and compatible iPhone running iOS 6 or later. ⁸ Devices must be WPA2-compliant with active OnStar service and data plan. Wi-Fi devices manufactured prior to 2006 may not be compatible. Please consult your device manufacturer for information regarding the WPA2 security protocol and Wi-Fi device compatibility. Visit onstar.com for details and system limitations. ⁹ If you subscribe after your trial period, subscriptions are continuous until you call SiriusXM to cancel. See SiriusXM Customer Agreement for complete terms at siriusxm.com. Other fees and taxes will apply. All fees and programming subject to change. XM satellite service is available only in the 48 contiguous United States and D.C. ¹⁰ Not compatible with all devices.



DIMENSIONS



MAXIMUM CAPACITIES

EPA-ESTIMATED FUEL ECONOMY

Manual	31 MPG city/39 highway/34 combined
Continuously Variable Transmission (CVT)	30 MPG city/39 highway/34 combined

FUEL TANK (APPROXIMATE)

9.2 gallons

PASSENGER VOLUME

86.3 cubic feet/seats 4

CARGO VOLUME¹

31.2 cubic feet

OWNERSHIP EXTRAS



CHEVROLET.COM/WARRANTY



CHEVROLET.COM/ACCESSORIES



ONSTAR.COM



SIRIUSXM.COM

WARRANTY

100,000-MILE/5-YEAR TRANSFERABLE POWERTRAIN LIMITED WARRANTY Every 2015 Chevrolet passenger car, light-duty truck, SUV and crossover comes with a 100,000-mile/5-year (whichever comes first) transferable Powertrain Limited Warranty. Plus, you get 100,000 miles/5 years (whichever comes first) of the 24/7 Roadside Assistance Program, the Courtesy Transportation Program, and much more. See dealer for details.

NEW VEHICLE LIMITED WARRANTY GM vehicles registered in the USA are covered for 36,000 miles/3 years (whichever comes first). The complete vehicle is covered, including tires, towing to your nearest Chevrolet dealership and cosmetic corrosion resulting from defects. Repairs will be made to correct any vehicle defect, and most warranty repairs will be made at no charge. In addition, rust-through corrosion will be covered for 100,000 miles/6 years (whichever comes first). See dealer for details.

¹ Cargo and load capacity limited by weight and distribution.



Information Provided by:
DEALER
E-PROCESS

IMPORTANT INFORMATION

CHEVROLET OWNER CENTER (MY.CHEVROLET.COM) Everything you need to know. Anything you need to do. Your Chevrolet Owner Center makes it easy. Create your account today to get the most out of your new vehicle. Get special alerts and offers, schedule service, review your maintenance schedule, and view how-to videos specifically for your vehicle. All online, anytime. Visit the Owner Center today to register or take a tour.

CHEVROLET COMPLETE CARE Every new 2015 Chevrolet Spark comes with 2 years/24,000 miles of scheduled maintenance that includes oil and filter changes, tire rotations and multipoint vehicle inspections. Covers only scheduled oil changes with filter and tire rotations according to your new vehicle's recommended maintenance schedule for up to 2 years or 24,000 miles, whichever comes first. Does not include air filters. Maximum of four service events. See participating dealer for other restrictions and complete details.

ENGINES Chevrolet products are equipped with engines produced by GM Powertrain or other suppliers to GM worldwide. The engines in Chevrolet products may also be used in other GM makes and models.

ASSEMBLY Chevrolet vehicles and their components are assembled or produced by different operating units of General Motors, its subsidiaries or suppliers to GM worldwide. We sometimes find it necessary to produce Chevrolet vehicles with different or differently sourced components than originally scheduled. Since some options may be unavailable when your vehicle is assembled, we suggest you verify that your vehicle includes the equipment you ordered and that, if there were changes, they are acceptable to you.

ONSTAR OnStar services require vehicle electrical system (including battery), wireless service and GPS satellite signals to be available and operating for features to function properly. OnStar acts as a link to existing emergency service providers. Subscription Service Agreement required. Call 1-888-4ONSTAR (1-888-466-7827) or visit onstar.com for OnStar Terms and Conditions, Privacy Policy, details and system limitations.

A NOTE ON CHILD SAFETY Always use safety belts and the correct restraint for your child's age and size. Even in vehicles equipped with the Passenger Sensing System, children are safer when properly secured in a rear seat in the appropriate infant, child or booster seat. Never place a rear-facing infant restraint in the front seat of any vehicle equipped with a passenger air bag. See the Owner's Manual and child safety seat instructions for more safety information.

IMPORTANT WORDS ABOUT THIS CATALOG We have tried to make this catalog comprehensive and factual. We reserve the right, however, to make changes at any time, without notice, in prices, colors, materials, equipment, specifications, models and availability. Specifications, dimensions, measurements, ratings and other numbers in this catalog and other printed materials provided at the dealership or affixed to

vehicles are approximations based on design and engineering drawings, prototypes and laboratory tests. Your vehicle may differ due to variations in manufacture and equipment. Since some information may have been updated since the time of printing, please check with your Chevrolet dealer for complete details. Chevrolet reserves the right to lengthen or shorten the model year for any product for any reason or to start and end model years at different times. Certain vehicle features may lose their usefulness over time due to obsolescence from technological changes. Unless otherwise noted, all claims based on GM Mini Car segment and latest available competitive information. Excludes other GM vehicles.

SPARE TIRE INFORMATION There is no standard jack or spare tire in the 2015 Chevrolet Spark. Your vehicle has a tire sealant and compressor kit that uses a liquid tire sealant to temporarily seal up to a one-quarter-inch puncture in the tread area of the tire. After using the tire inflator kit, it is recommended that you take the tire to an authorized retailer for inspection and repair as soon as possible, but at least within 100 miles of driving. The tire sealant cannot seal and inflate sidewall damage, punctures larger than one-quarter inch, or a tire that has unseated from the wheel. The sealant can only be used on one tire and for one time before its expiration date.

FLEET ORDERS Some standard content may be deleted on fleet orders. See dealer for details.

CHEVROLET OWNERSHIP EXPERIENCE Chevrolet is committed to enhancing the vehicle shopping and ownership experience through a wide array of programs. Visit chevrolet.com to build and price, find a vehicle, request a quote, compare vehicles, find financial tools or track your vehicle order. You'll also find information about 24-hour Roadside Assistance, Courtesy Transportation, Customer Assistance, GM Mobility, safety and current incentives.

CHEVROLET.COM/SAFETY Chevrolet is committed to keeping you and your family safe – from the start of your journey to your destination. That's why every Chevrolet is designed with a comprehensive list of safety and security features to help give you peace of mind.

GMMOBILITY.COM (1-800-323-9935) GM MobilitySM offers financial assistance for eligible adaptive equipment to make automotive travel easier for persons with disabilities or special transportation needs. To learn more about special GM Mobility offers, visit gmmobility.com.

THE BUYPOWER CARD The Chevrolet BuyPower Card – Every purchase you make with the BuyPower Card from Capital One* helps you earn toward an eligible new Chevrolet, Buick, GMC or Cadillac vehicle. There's no limit on the amount you can earn or redeem, and your Earnings don't expire. Visit chevroletbuypowercard.com/catalogs.

* Capital One, N.A. is the issuer of the BuyPower Card. General Motors ("GM") is responsible for the operation and administration of the Earnings program.



TWITTER.COM/CHEVROLET



YOUTUBE.COM/CHEVROLET



FACEBOOK.COM/CHEVROLET

GM, the GM logo, Chevrolet, the Chevrolet logo, and the slogans, emblems, vehicle model names, vehicle body designs and other marks appearing in this catalog are the trademarks and/or service marks of General Motors, its subsidiaries, affiliates or licensors. ©2014 OnStar. All rights reserved. SiriusXM and all related marks and logos are trademarks of Sirius XM Radio Inc. The Bluetooth word mark is a registered trademark owned by Bluetooth SIG, Inc., and any use of such mark by Chevrolet is under license.

©2014 General Motors. All rights reserved. September 2014



FIND NEW ROADS™

CHEVROLET.COM



Information Provided by:

DEALER
E-PROCESS